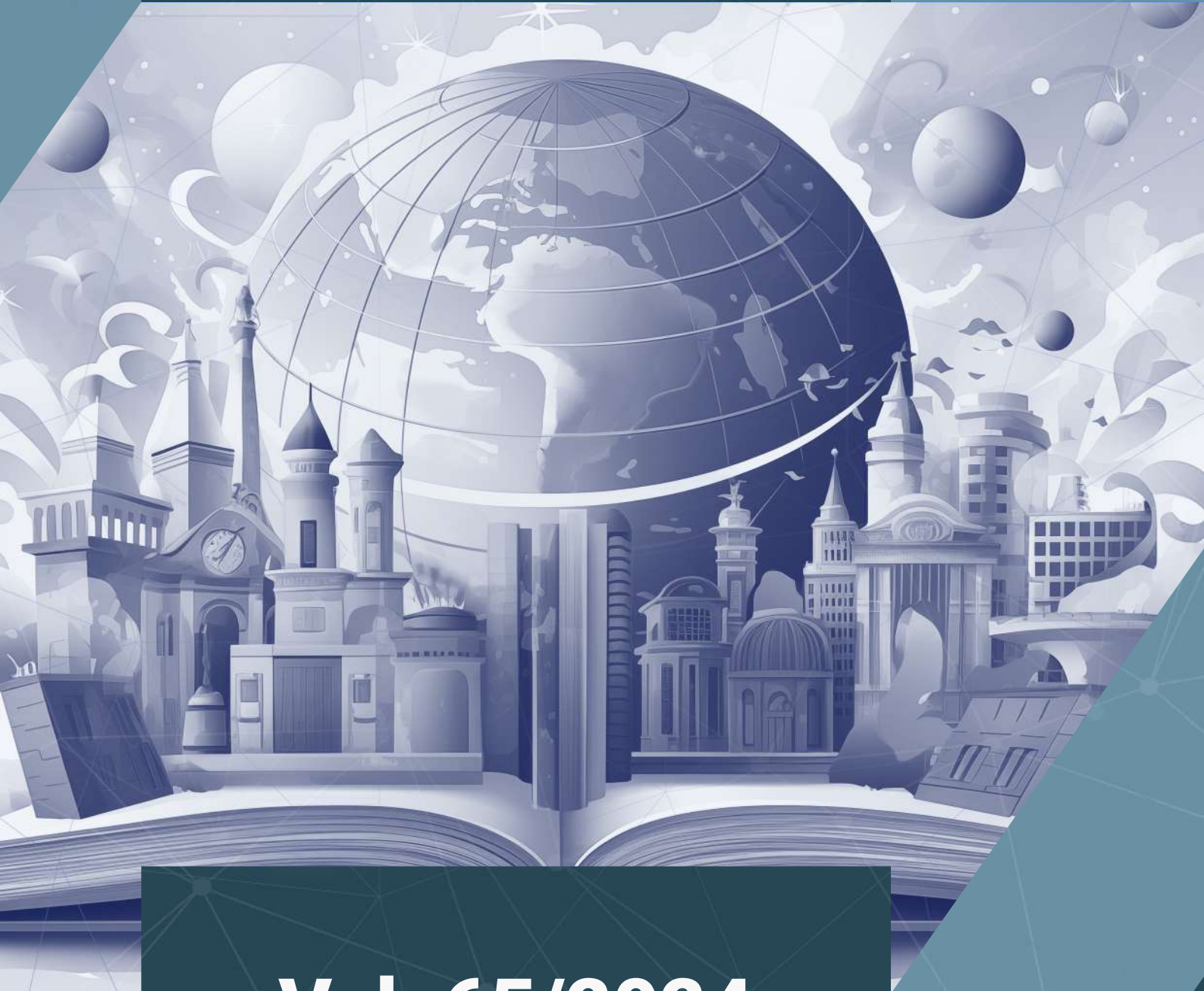




**TECHNIUM**  
SOCIAL SCIENCES JOURNAL



**Vol. 65/2024**  
A New Decade for Social Changes

**PLUS**  
**COMMUNICATION P**



International  
Communication & PR

# Story Map of Kampung Jawa Tondano

## Visualization of Cultural Tourism Destinations

Anindya Puspita Putri<sup>1,\*</sup> Selvana Treny Rosita Tewa<sup>2</sup> Grace Feibe E Suoth<sup>3</sup>

Yemima Otuluwo<sup>4</sup>

<sup>1234</sup> *Geography Study Program, Manado State University, Indonesia*

\*Corresponding author. Email: [anindyaputri@unima.ac.id](mailto:anindyaputri@unima.ac.id)

### ABSTRACT

The use of story maps has been widely used to help overcome several problems, one of which is the use of story maps as a visualization medium for tourist destinations. Story map is an open-source platform developed by the Knight Lab at Northwestern University, this platform makes it possible to integrate historical and contemporary maps into interactive stories. Story maps are able to provide information related to tourist attractions online on a location basis. One of the cultural tourism destinations in Minahasa Regency is Kampung Jawa Tondano. This village was formed from the exile of Kiai Mojo and his followers as a result of the Java War, namely the conflict between Prince Diponegoro and the Dutch colonial government. Apart from providing information regarding Kampung Jawa Tondano, the use of story maps can be used as an initial step in developing tourist destinations in Minahasa Regency

**Keywords:** *Story map, Cultural Tourism, Kampung Jawa Tondano.*

### 1. INTRODUCTION

Tourism in a broad sense is defined as recreational activities outside one's domicile to escape from routine work or find another areas. Meanwhile, tourism in particular is a very complex phenomenon of movement of people, goods and services [1]. Cultural tourism is a type of tourism that is based on a mosaic of places, traditions, arts, ceremonies and the experience of photographing a nation or ethnic group with communities that reflect the diversity and identity of the community or nation concerned [2]. Cultural tourism is a form of tourism that provides historical, religious and educational tourism experiences. Tourist destination areas are a central element in travel decisions. Tourist destination areas are the spearhead of tourism. All impacts of tourism can be felt in Tourist destination areas, therefore appropriate planning and management

strategies are needed to attract tourists to Tourist destination areas [1].

Implementation of tourism development in Minahasa Regency as a tourist destination must continue to be developed. Development in the tourism sector in an area will certainly have an impact on local regional development. Minahasa Regency already has a natural tourist destination, namely Tondano Lake, however of course it requires the development of supporting tourism from the surrounding area. One of the cultural tourism destinations that can be visited in North Tondano District is Kampung Jawa Tondano. Java Tondano Village is one of the Muslim villages that has a unique cultural identity in Minahasa Regency.

The history of this village was formed from the exile of Kiai Mojo and his followers as a result of the Java

War of 1825-1830. Islamic culture is growing strongly and has formed its own cultural identity and is different from other villages in Minahasa Regency. The Javanese village of Tondano, where the majority of people are Muslim, is surrounded by villages whose people are Christian. Cultural acculturation with local residents actually creates and blends without leaving the cultural identity of the homeland, namely Java. Through the marriage relationship between Kiai Mojo followers and the Minahasa people, a unique identity is created which is reflected in the layout of the settlement, the shape of the house and local customs [3]. Apart from having an identity as a cultural village, it seems that Kampung Jawa Tondano also has enchanting natural beauty. This is of course because it is located not far from Tondano Lake. Based on data from BPS Minahasa Regency, Kampung Jawa Tondano has cultural tourism potential in the form of history and religion (Table 1) [4]. Seeing the cultural tourism potential that exists in Kampung Jawa Tondano, efforts are certainly needed to promote the village so that it is more widely known by the community. By expanding information regarding Kampung Jawa Tondano, it can create interest for tourists to visit.

**Table 1.** Types and Number of Tourist Attractions in North Tondano District.

Village	Nature	History	Religy	Other
Sumangkara	-	-	-	-
Sasaran	-	-	-	-
Kembuan	-	-	-	-
Tonsea Lama	-	-	-	-
Kampung Jawa	-	1	2	-
Wulauan	-	1	-	-
Marawas	-	-	-	-
Kembuan Satu	-	-	-	-

(Source: North Tondano District in Number for 2020 BPS Minahasa Regency)

One of the determining factors for the success of a tourism business is accessibility or affordability. Accessibility here can be in the form of ease of getting to a location or also ease of obtaining information related to tourist destinations. Tourist attractions are not like industrial products that can be transported and sold to markets, and tourism products are rarely mobile. Therefore, we need a medium that connects tourists with tourism products, namely access, in this case transportation [1]. As information technology advances, the need for tourist information is increasingly needed in terms of access to tourist destination areas. This need for access is balanced by the emergence of various applications developed to make it easier for tourists to obtain information regarding tourist destinations.

Story map is an open-source platform developed by Knight Lab at Northwestern University, this platform makes it possible to integrate historical and contemporary maps into interactive stories [5], [6]. Story maps have been widely used, one of which is in the field of tourism . Story maps are able to provide

information related to tourist attractions online. By using a story map, you can provide a tourist experience expressed in interesting images and text as well as providing information related to tourist destination objects.

This study aims to create a GIS-based visualization of information related to cultural tourism objects in Kampung Jawa Tondano. Through the Story Map platform, information will be displayed regarding cultural tourism potential in the form of history, religion, cultural heritage remains and descriptions of settlements from Kampung Jawa Tondano.

## 2. RESEARCH METHODS

According to Seemann (2021) a story map is defined as a form of visual representation in a geographical perspective that depicts certain topics, related to certain events, processes, places, landscapes or ideas, and tells a story in which spatial relationships [7]. Use Story maps can function as tools in geographic studies. The use of story maps makes it possible to display geographic data in the form of interactive maps. The use of story maps can also be used to study tourism geography as part of the visualization of tourist destination promotions [6]. The steps in the story map study include:

- (1) Determine the story map theme and study area.
- (2) Collection of materials including Sattelite Imagery basemap of the study area from Mapbox (<https://studio.mapbox.com/>), field documentation, literature studies and interview results.
- (3) The process of creating a story map using the StoryMap JS platform <https://storymap.knightlab.com>.
- (4) Accessing StoryMap JS.
- (5) Exporting a tile URL from Mapbox and adding to StoryMap JS.
- (6) Adding content and media items for each location (slide) in StoryMap JS.
- (7) Customize Story Map: editing location markers, customize marker icons, input picture and adding text information, preview and save changes.

## 3. DATA ANALYSIS

### 3.1. Socio-Economic Conditions and History of the Javanese Village of Tondano

The socio-cultural conditions of Kampung Jawa Tondano are influenced by the community and surrounding environment which are formed from social interaction and cultural acculturation from the exiled community of Kiai Mojo and his followers, the majority of whom are Muslim [3]. Kampung Jawa Tondano is

administratively a Kampung Jawa sub-district which has an area of 0.45 km<sup>2</sup>. The area of the Kampung Jawa sub-district is not very large, only around 1.08% of the total area of North Tondano District. However, this village has the largest population, namely 2,705 people consisting of 1,370 men and 1,335 women. Most of the population work as farmers. Ability in agriculture is the main characteristic of the people of Kampung Jawa Tondano and has developed from generation to generation.

The history of the formation of Kampung Jawa Tondano began with the exile of Kiai Mojo and his followers to the Land of Minahasa. Tondano was chosen as the exile location for Kiai Mojo and his followers by considering several aspects, namely (1) the location of Tondano which is quite isolated in the Minahasa highlands, (2) the reputation of the Tondano people who are known as people with a tough character, (3) the presence of Dutch military troops in Tondano [8]. In contrast to the formation of Islamic villages in the archipelago which originate from Islamic cultural patterns, the settlement activities of the Javanese Village community are strongly influenced by the upheaval of the stigma of exile/outcast communities. The form of residential spatial planning was controlled by the Dutch colonial government and the ability to adapt to the environment created a distinctive spatial layout.

### **3.2. Kampung Jawa Tondano Tourist Destination**

#### *3.2.1. Tondano Lake*

Tondano Lake is the largest lake in North Sulawesi Province, located in Minahasa Regency. Even though it is not part of Kampung Jawa Tondano, Tondano Lake has become the main magnet for tourists visiting Minahasa Regency. It was formed from the Tondano Caldera at  $2 \pm 0.4$  mya. and developed into the current Tondano Lake due to global climate change activities, tectonic and volcanic activity [9].

#### *3.2.2. Al Falah Mosque*

Al Falah Mosque Kampung Jawa Tondano is a mosque that has a blend of Islamic and Javanese architectural styles. This mosque was originally a very simple small prayer room and then developed into a mosque with four pillars like the Great Mosque of Demak [10]. Islamization in the archipelago was carried out peacefully through building and carving arts [11]. This mosque apparently adopted a lot of architecture from Islamic and Javanese culture, this can be seen in the characteristic carvings on the ceiling and pillars in the main room of the mosque.

In its development, the Al Falah Mosque has its own magnetism and charisma for every Muslim who visits Minahasa Regency, especially Kampung Jawa Tondano.

Many mosque visitors from outside the area stop by this mosque, either just to carry out their obligatory prayers or to be curious about the Islamic culture in Kampung Jawa Tondano.

#### *3.2.3. Tomb complex of Kiai Mojo and his followers*

The grave complex of Kiai Mojo and his followers is located in Wulauan Village, Toulimambot District, Minahasa Regency. The tomb is placed on a hill on the northeast side of the Al Falah Mosque at a distance of 1.4 km. Based on research results from the Manado Archaeological Center team in 1995, in this complex there were 188 tombs, some of which were intact and damaged to the point that they could not be identified [12]. Kiai Mojo's grave has been designated as a Cultural Heritage by the Minister of Culture and Tourism through Minister of Ministerial Regulation Number PM.22/PW.007/MKP/2007. Then it was re-established through the Decree of the Minister of Education and Culture of the Republic of Indonesia Number 267/M/2016 concerning Cultural Heritage Sites.

Seeing the cultural continuity of Islamic and Javanese culture, it is stated in the funeral procedures for Kiai Mojo and his followers (1) The use of a hill or mountain at Kiai Mojo's grave as a burial place which is considered sacred for the most respected figures. (2) The culture of grave pilgrimage has become a ritual in itself for the people of Kampung Jawa Tondano. (3) The pattern of placement of graves for highly/most respected figures. This figure is usually placed in the very center (centre) or at the very back (high) of the burial complex [3].

#### *3.2.4. Kampung Jawa Tondano Settlement.*

Settlement is a space for living and sheltering which is formed from human interaction with its environment. Based on the results of field observations, the settlements of the Kampung Jawa Tondano community have characteristics of cluster settlement patterns consisting of blocks of groups of houses with regular road arrangements. Most houses in Kampung Jawa Tondano have typical Minahasan architectural characteristics, namely stilt houses. According to N. Graafland, the initial houses of Kiai Mojo and his followers were houses with Javanese architectural style in a simple context, but eventually changed to typical Minahasan houses [13]. This was caused by a major earthquake that hit Minahasa in 1845. According to Sprewenberg who visited, he said that initially the houses of Kiai Mojo and his followers followed the pattern of Javanese houses. After the earthquake, the houses in Kampung Jawa Tondano were built using tall pillars typical of Minahasa houses. [10].

### **3.3. Story Map Kampung Jawa Tondano Visualization of Cultural Tourism**

The result of this study is a story map containing visualization of natural and cultural tourism destinations in Kampung Jawa Tondano, Minahasa Regency (Figure 3). The story map platform can be accessed via the link <https://bit.ly/wisatabudayajaton> or by scanning the QR Code below (Figure 1). The information contained therein is in the form of photos of cultural and natural objects that are markers of Kampung Jawa Tondano.



Figure 1. QR Code of Story Map Kampung Jawa Tondano.

The story map consists of seven pages, starting from the home page containing an overview of Tondano City with a background of satellite imagery map integrated from the Mapbox. The display can be customized according to your ideas. MapBox allows to change colors and other map elements to align with style guidelines or personal tastes. The combination of satellite imagery with old maps as a background provides an overview of current conditions with past conditions so that it can show differences spatially.

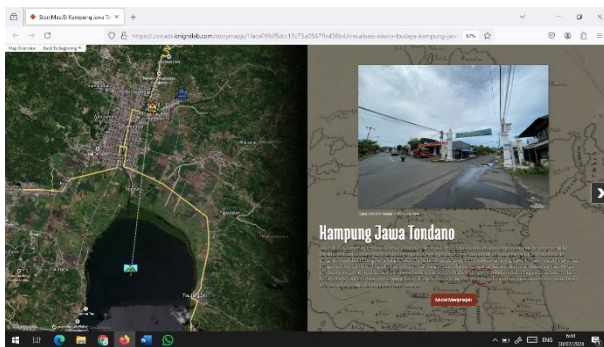


Figure 2. Visualization Tourism Destination of Kampung Jawa Tondano.

Tondano Lake is located not far from Kampung Jawa Tondano. Although not part of Kampung Jawa Tondano, Tondano Lake has become the main mascot for tourism in Minahasa Regency. Therefore, it is considered necessary to include information related to Tondano Lake in the story map visualization (Figure 3).

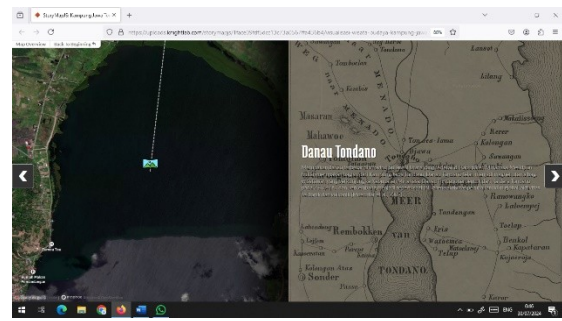


Figure 3. Visualization of Tondano Lake.

The religious tourism destination that can be visited when entering Kampung Jawa Tondano is the Al Falah Mosque, which is the center of religious activities for the local community (Figure 4)

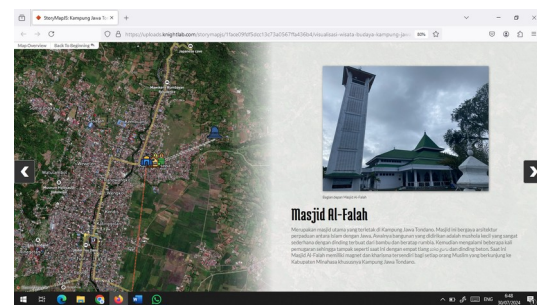


Figure 4. Visualization of Al-Falah Mosque.

A historical tourist destination that can be visited is the Kiai Mojo Tomb Complex and his followers which is located on a hill in Wulauan Village, Toulimambot District, Minahasa Regency (Figure 5).

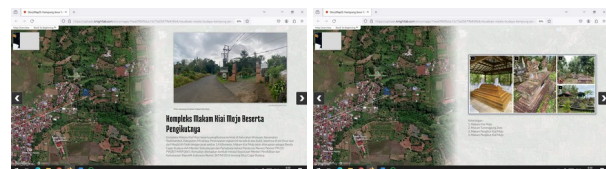


Figure 5. Visualization of Kiai Mojo Tomb Complex

The settlement of Kampung Jawa Tondano is dominated by typical Minahasa stilt houses. From the settlement entity that was formed, the history of the formation of Kampung Jawa Tondano can emerge (Figure 6).

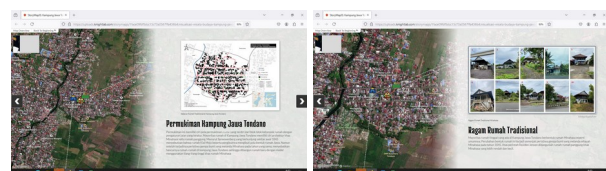


Figure 6. Visualization of Kampung Jawa Tondano Settlement.

The visualization results using the story map platform are expected to be one of the accesses for

tourists to obtain information related to Kampung Jawa Tondano and natural and cultural tourism destinations. In addition, it can be used as an interactive learning media for students from elementary to high school.

#### 4. CONCLUSIONS

Using the Story Map digital platform can help in various ways, especially in the field of promoting tourist destinations. In addition, in its implementation, this platform can be used as part of learning tourism geography studies. By using a story map, information related to Kampung Jawa Tondano can be widely accessed by the public online.

#### ACKNOWLEDGMENTS

Thanks to the team that has worked together in the preparation of this article

#### REFERENCES

- [1] J. Damanik and H. F. Weber, *Perencanaan Ekowisata dari Teori ke Aplikasi*. Yogyakarta: CV Andi Offset, 2006.
- [2] Ismayanti, *Pengantar Pariwisata*. Jakarta: Grasindo, 2010.
- [3] A. P. Putri and H. R. Pratama, "KAMPUNG JAWA TONDANO DALAM PERSPEKTIF ARKEOLOGI RUANG," *Aqlam J. Islam Plur.*, vol. 9, no. 1, Jul. 2024, doi: 10.30984/ajip.v9i1.3111.
- [4] Badan Pusat Statistik Kabupaten Minahasa, *Kecamatan Tondano Utara Dalam Angka*. Tondano: Badan Pusat Statistik Kabupaten Minahasa, 2020.
- [5] E. Y. Hayes and M. Partlow, "Displaying a Georeferenced Map in KnightLab's StoryMap JS," *Program. Hist.*, no. 11, May 2022, doi: 10.46430/phen0098.
- [6] F. I. Harpudiansyah, U. Azmi, and F. A. P. Maharani, "Visualisasi Wisata Sejarah dan Religi di Dusun Pondok Wonolelo Menggunakan Story Map," *EL-JUGHRAFIYAH*, vol. 3, no. 2, p. 71, Aug. 2023, doi: 10.24014/jej.v3i2.24727.
- [7] J. Seemann, "Story Maps and Visual Narrative," in *International Encyclopedia of Geography*, Wiley, 2021, pp. 1–9. doi: 10.1002/9781118786352.wbieg2023.
- [8] T. Babcock, "Muslim Minahasans with Roots in Java: The People of Kampung Jawa Tondano," *Indonesia*, vol. 32, p. 74, Oct. 1981, doi: 10.2307/3350856.
- [9] H. Moechtar, I. Pratomo, H. Mulyana, and S. Poedjoprajitno, "Gerakan struktur dan kaitannya dengan faktor kendali tektonik, berdasarkan analisis stratigrafi; Studi kasus geologi kuarter terhadap fase perkembangan Danau Tondano purba sepanjang Remboken - Kakas, Kec. Remboken dan Kec. Kakas, Kab. Tomohon, Sulawesi Ut.," *Indones. J. Geosci.*, vol. 2, no. 3, pp. 177–190, Sep. 2007, doi: 10.17014/ijog.2.3.177-190.
- [10] R. A. C. Kembuan, "'Bahagia di Pengasingan' Kehidupan Sosial Budaya Masyarakat Buangan di Kampung Jawa Tondano (1830-1908)," Universitas Gadjah Mada, Yogyakarta, 2016.
- [11] M. D. Poesponegoro and N. Notosusanto, *Sejarah Nasional Indonesia III*. Jakarta: Balai Pustaka, 1990.
- [12] I. Saptaningrum, "Kekunoan Islam di Kompleks Makam Kyai Modjo (Tinjauan Atas Bentuk dan Tata Letak Makamnya)," *Jejak-Jejak Arkeol.*, vol. 2, pp. 17–25, 2001.
- [13] N. Graafland, *Minahasa: Negeri, Rakyat, dan Budayanya*. Jakarta: Pustaka Utama Grafiti, 1991.