



**TECHNIUM**  
**SOCIAL SCIENCES JOURNAL**

**Vol. 37, 2022**

**A new decade  
for social changes**

[www.techniumscience.com](http://www.techniumscience.com)

ISSN 2668-7798



9 772668 779000

## **Evaluation of citizen participation in World Bank projects in Algeria - Sidi Slimane District/Town of Bou Saada**

**Ahmed Lemkhalti, Khalfallah Boudjema**

<sup>1</sup>Ph.D. Student. Faculty of Science and Technology. Department Of Architecture Mohamed Khider University. Biskra, Algeria, <sup>2</sup>Professor Institute of Urban Management and Techniques GTU. Mohamed Boudiaf Msila University, Algeria

[ahmed.lemkhalti@univ-msila.dz](mailto:ahmed.lemkhalti@univ-msila.dz), [boudjema.khalfallah@univ-msila.dz](mailto:boudjema.khalfallah@univ-msila.dz)

### **Abstract.**

Citizen participation has become one of the pillars of good governance in order to achieve sustainable local development. This is what the World Bank's contribution in Algeria has been aimed at, through the Precarious Habitat Resorption Program (P.H.R), by adopting the pattern of popular participation among its priorities to change the deteriorating situation experienced by the residents of these neighborhoods. This study is to assess the popular participation in these projects and to determine the extent to which they have affected public action and the improvement of the conditions of the population, and what obstacles have prevented the realization of the objectives of this; And as a research methodology, the descriptive method was used, as well as the method hq<sup>2</sup>r, (h: high, q: quality, e: (environmental/ economic efficiency/social equity), r: (neighborhood renewal / building rehabilitation), through the L indi (indicateur's Impact) application. The results of the first phase of the preliminary situational evaluation were evaluated at between 0 and 1.4, where a total absence of popular participation was noted. In the second phase of the evaluation, after the exploitation of the project, the indicators jumped to 3 points. This explains the significant improvement in public action, but popular participation remains below the required level, due to the weakness of the legal system and the absence of a legal framework that controls public action and restrains the authority of the administration.

**Keywords.** evaluation-participation-world bank projects- the indi model (indicateur's Impact) - Sidi Slimane district-Bou Saada

### **Introduction**

Due to the diverse and complex problems, what has experienced the city today, (Maynard, 2013), the notion of sustainability, represented by the traditional three-pillar framework for sustainable development (social, economic, environmental), (Hensenet Maenpaa, 2007), (... and sometimes supplemented with a fourth pillar: participatory democracy (or governance), this can be a theme or "a hat" common to the three pillars, without ignoring that there are those who still add other pillars like culture and education...), (Catherine Charlo-Valdieu and Philippe Outrequin 2011). Based on this concept, the city must be a place that

offers all the needs of the population, And a space that embraces and organizes interactions, (Reed, 2008), and this helps guide the city's designer and manager in shaping its rebirth and development, (Irvin and Stansbury, 2004). Population density is not a problem in itself, and ethnic diversity does not prevent the true homogeneity of its inhabitants, provided that they are effectively involved in the management of the public act, (Godschalk., 2003); It is not only a condition for its success, but also a social and democratic necessity, since participation is therefore not an objective and universal phenomenon, but rather a social construction determined by the interaction between the participants and the social context, participation is built on the interaction between the characteristics of the group that participates the nature of the project in which one is involved, the access to and control of the resources required, and the political conditions, (Sandra Astudillo Moreno, 2004). Algeria is considered to be one of the third world countries that suffers significantly from the phenomenon of illegal, irregular and unsanitary constructions, and this is the result of the development of the country's social and economic structures. This is due to Algeria's pursuit of a development strategy that has caused an imbalance between sectors such as its interest in the industrial sector and its abandonment of other sectors such as construction and reconstruction, which has pushed the population towards the construction and reconstruction sector. Migration from the countryside to the cities to try to improve their living conditions, which led to the emergence of clandestine neighborhoods that distorted the urban fabric of the cities in addition to the emergence of many social evils such as terrorism, drugs, crime... etc. And given the circumstances Algeria experienced in the early 90s, a political change in the system of government, a one-party policy to a multi-party policy, and similar ambiguities in all areas, (Hayet Mebirouk.2018), especially in the field of security, the exacerbation of terrorism, the decline in the value of oil and gas and the deficit of the state budget, and as an attempt to meet the challenges and win development stakes, (Bojana Mihajlović, 2015). The Algerian state had to resort to borrowing from the World Bank, in order to improve the living conditions suffered by the inhabitants of these slums, among them is the Sidi-Slimane neighborhood, which is considered one of the most important projects in which direct citizen participation has been adopted, (Kaddour Derbal, 2022); therefore, we will try to determine the level of participation and its impact on the improvement of living conditions in this neighborhood.

### **Materials and methods**

The context of urban development has evolved in recent years, whether in the definition of concepts and approaches, in the regulatory and legislative texts or in research and experimentation projects, has caused the emergence of different territorial analysis grids; of different methods of diagnosis of territory or micro territory "neighborhood for example", which of them will be the subject of the research document.

### **Development and popular participation**

The convening of the United Nations Conference in Rio Janeiro in 1992, exactly 20 years after the Stockholm Conference, which was called the Earth Summit, had a great impact and an important turning point in reorienting national and international policies towards integrating environmental and social dimensions into economic and development objective. (Romain Bony-C. 2019). Effective in promoting the development and strengthening of the institutional structure of environmental protection and sustainable development of the national and international levels. The United Nations General Assembly, in Resolution 47/191 of December 22, 1992, (- Document of the United Nations Environment Program.UNEP.2001)

adopted new international institutional arrangements that include the establishment of the Commission on Sustainable Development. The acceleration of the development of international regimes to address complex global environmental issues such as climate change, desertification and, for governments, the growing recognition of civil society organizations and the sector private and other key groups in society as necessary to achieve the Sustainable Development Goals, (Kelvin B.Laurence P. Ben Parker.2005). Through the foregoing, the issue of popular participation is one of the topics that has become a priority for countries to bring about change that aims at development at the scientific and planning levels. However, the volume of popular participation did not live up to the desired levels, and this is what distinguished the failure of development programs at the local level, regional and even national. Hence some voices calling for the participation of community members to achieve development programs by activating and redressing the citizen's absence from the actual participation in the embodiment of development projects, and that the implementation of these programs should not be seen as goals in themselves, and that they are not measured by the increase in production or The breadth of service, but more importantly, the extent of positive participation of community members in planning, (Béatrice Plottu&Eric Plottu, 2021), implementing and evaluating those projects and services; In the midst of these transformations, new terms emerged in the development literature, such as popular participation and participatory planning.

### **Previous studies**

The great failure that prevailed in all fields, political, economic, environmental, social and health...etc, especially in the nineteenth century, had a great impact on the emergence of the participatory approach, by involving all actors, whether they were officials, managers or users in order to achieve democracy Stronger and better quality of the final product and a more effective process (S. R. Osmani.2007), which prompted more research through a set of criteria necessary for successful participation and differentiation between the types of participants, as these criteria depended on three main aspects, equity, efficiency, and social education, in addition to the stakeholders usually mentioned Such as citizens, interest groups, experts, employees, administrators...etc.The participatory approach has become the most common and widely used method, especially in areas that search for efficiency, efficiency, service quality, social capacity and production sustainability. Which resulted in a lot of scientific research that prompted this approach to develop its methods and mechanisms for a sustainable environment; In this paper, we will discuss, for example, but not limited to, the study by (Ulla Rosenström. Simo Kyllönen, 2007). Under the title "The effects of a participatory approach in the development of indicators of sustainable development at the national level in Finland" This study discussed the specifications required as evaluation criteria for policy program operations at the national level for this country such as the development of sustainable development indicator (SDI). The results were based on documentation of indicators working group meetings, written comments, and a study of putative end-users, conducted after the indicators were published. The results of the study concluded that the extensive and extensive participation of experts and civil servants increased the efficiency of the results and led to an increase in efficiency in work methods. However, it was noted that this matter led to technocratic participation, the absence of democratic participation and the absence of social learning. Thus, the ultimate goal of sustainable development institutions to contribute to achieving sustainability has not been reached. While the use of public participation in planning and land-use planning processes is often interpreted by site users as a challenge to existing planning plans, participation becomes mandatory in planning procedures. and guidelines for public

participation are seldom enforced. In an attempt to answer these forms, Both researchers, (Béatrice Plottu, Eric Plottu, 2021), In a case study of an expansion project for a French university campus, site users were interviewed, either automatically or with the assistance of an experimental protocol, regarding the value of the built and inbuilt elements of the campus, how much they were worth, and whether they should be preserved in future planning. The main objective of this study is to prove that uninspired participation may lead to counterproductive results, and lead to the reproduction of current planning schemes, while the results were just the opposite.

### **The difficulties facing the application of participation:**

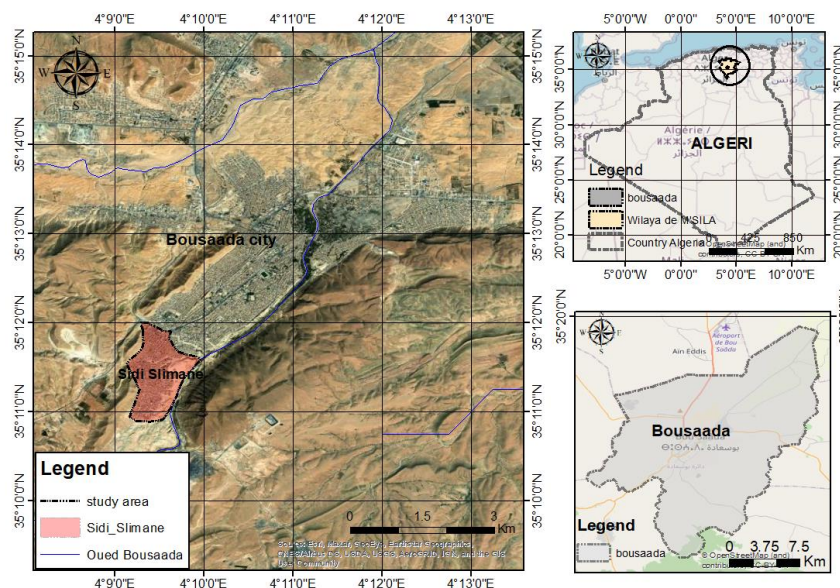
After examining many of the previous experiences and studies that were the subject of popular participation, some difficulties were drawn that prevented always reaching the desired goals, the most important of which are:

- 1- Insight into the concerned population: The view of the holders of this project from the beginning is that the residents of these neighborhoods represent a problem in itself and that they are unable, and not as positive actors or as an invigorating resource for city policy, and this is what establishes a large part of the reason for the weakness and failure of local democracy: when we do not trust the capabilities of the residents, we cannot Go automatically to seek their opinion on issues that make their daily life.
- 2- A specific view of the topics: Often, issues that are of interest to the population are not raised, but rather issues that are of interest to government institutions, such as: urbanization problems and the life framework, while the development of social life, education, health, employment ... etc. are among the topics that are absent from the action participatory.
- 3- The ability to influence projects: It seems that there is a clash in many positions between representative democracy and participatory democracy, especially in the decision-making authority, as the influence of people's representatives through local elections does not leave a wider scope for the population in decision-making, which will limit the application of participation in the best case.
- 4- - Collision: one of the components of the discussion: Collision and the attraction of interests are among the features of every debate, whether it is among the citizens themselves or between them and the authority. And the need to manage and control it well is one of the methods that raise the effectiveness of the participatory approach.
- 5- Withholding the activity from the citizens: It is noted that the framework of public policies, including the methods adopted in the city's policy, do not encourage the initiatives of the residents who are considered positive actors in the conduct of public affairs, especially local ones, and that they do not have the legitimacy and ability to become actors in urban improvement in general.
- 6- The insufficiency of the methods used in polarization: On the other hand, the participatory approaches used take a form of exclusion for most people, and even more so for disadvantaged groups, especially young people, and it is not limited to places, timing and forms of space organization that are determined before, such as many brakes and obstacles and things that are not encourage participation.
- 7- The weakness of the collective framing: It seems that the weakness of the framing carried out by the intermediary bodies of associations, parties and unions has led to the weakness of collective knowledge and training in mobilizing the masses compared to what it was

in the past, in addition to the spread of the phenomenon of heterogeneity and cohesion among the population, all of which led to the weakness of citizenship.

### Case study

The city of Bou-Saada is the first oasis found in Algeria, it is located in the southeast of northern Algeria, and 155 miles from the capital Algiers and covers an area of 140 miles<sup>2</sup>; it is considered a real crossroads between the Mediterranean and the Sahara, (Malika Ouzir, Boudjemaa Khalfallah. 2016); locally, the capital of the Daira of Bou-Saada is located south of the Wilaya of M'sila, (Y. Nacib. 1986). See figure n°1 , satellite image of the city, 2022; and Geographical location of the city of Bou Saada .



**Figure n°1**, Satellite image of the city. 2022, and Geographical location of the city of Bou Saada (Source: www.cartograf.fr+ Authors processing2022.).

### Presentation of the district.

Sidi Slimane is one of three neighborhoods in the city, which have benefited from the World Bank's contribution to the urban improvement processes adopted by the state, in order to involve the citizen in improving their living conditions; the district occupies an area of 115 hectares and a population of 45,000, according to the 2018 census, of the commune of Bou -saâda, and a population density estimated at 391 h/ha, making it the largest district of the city.

### Location and limitations.

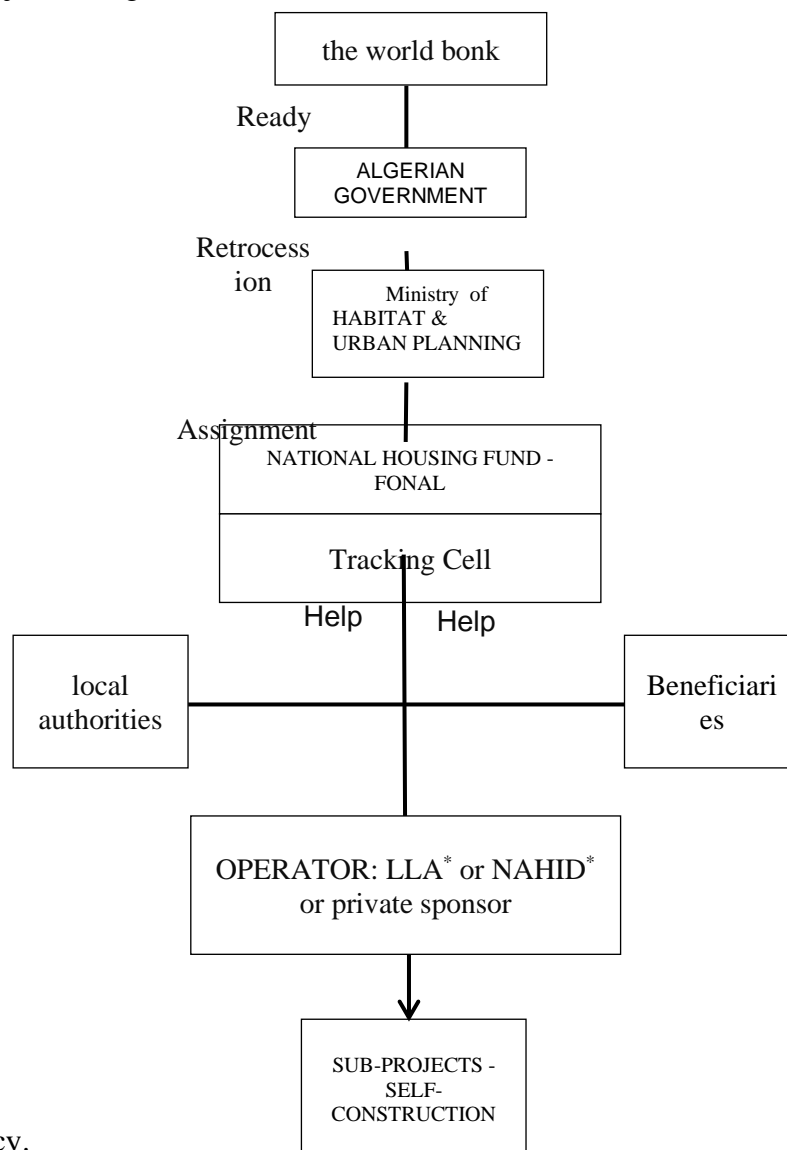
The Sidi Slimane neighborhood is located in the southwestern part of the city of Bou -saâda, its boundaries are as follows:

- From the North: National Road N°46 + Suleiman Amirat District + Oued Ghailassa.
- From the south: Oued Bou -saâda.
- From the east: Oued Bou -saâda+ Mount Kerdada.
- From the west: Mount Azzedine. It is about 3 km from the city center.

### Precarious habitat resorption program (P.H.R).

According to the Ministry of Housing report, the insecure housing absorption program is considered a new tool of city policy and aims to achieve the following objectives:

- Address the problem of absorption of insecure housing with a holistic vision of the urban and municipal levels.
  - Develop new methods to identify targeted urban agglomerations, to ensure the effectiveness of government intervention in an appropriate and more effective manner.
  - Develop new mechanisms to ensure the participation of residents in the implementation of the project's programs to improve living conditions, (Algerie-2011 National Report).
- In 1998, a US\$150,000,000 loan agreement was concluded between the International Bank for Reconstruction and Development (IBRD), and the Algerian government for the implementation of a national and multi-partnership program for the Resorption of Precarious Habitat ,(participatory approach), see figure n°2 ,various supervisory bodies involved in the management of this project in Algeria.



\*LLA: local land agency.

\*AADL: National Agency for Housing Improvement and Development.

**Figure n°2.** Various supervisory bodies involved in the management of this project in Algeria.  
**Source:** Ministry of Habitat, 2009 + Authors processing 2022.

### **Approach and principles used.**

HQE<sup>2</sup>R, (H: high, Q: quality, E: (environmental/ economic efficiency/social equity), R: (neighborhood renewal / building rehabilitation), An integrated approach to sustainable development, developed by a group of 10 research centers and 13 cities in 7 European countries, (Catherine, C-V. Philippe, O.2004); first we selected six principles of sustainable development at the city and neighborhood level from the set of principles presented in Rio in 1992, we selected those that apply more particularly at the neighborhood and city level, and selected six that we consider particularly important for this area: economic efficiency, social equity, environmental efficiency, the long-term principle, the principle of comprehensiveness and, finally, the principle of governance, These 6 principles are in a way the permanent map background of the hqe<sup>2</sup>r approach.

This method aims to integrate sustainable development into urban projects, based in all phases and stages on citizen participation. This method revolves around four phases: The first is the decision phase, and begins with the identification of neighborhood problems (technical, environmental, social...etc.), which requires intervention, then the second stage, which is decision-making, which is linked to the strategy that is adopted in order to determine the type of intervention, which must be sustainable in the district, All this, of course, in coordination with officials, local elected officials and the population; Then comes the second phase, where the current situation of the neighborhood is identified, in a third step, where the descriptive approach is the basis of the work, and in a fourth step, an overall synthesis of the neighborhood is made, where the assets that characterize this neighborhood are identified, as well as the identification of the defects of it, which have weakened social cohesion, then comes the fifth stage, where the issues are determined and the strategic priorities of the neighborhood are arranged, taking into account the sustainable development goals; Then we come to the third phase, which is the stage of establishing the decision plan, the sixth stage of which is where the intervention scenarios are prepared according to the principles of sustainable development. And this is done using the Indi application, which we will see how to apply later; and finally come the fourth phase, which includes the eighth stage, which revolves around the preparation of an action plan for the district, which takes into account the involvement of sustainable development, whether in the projects of rehabilitated or renovated housing, and the same for inbuilt spaces, followed by the ninth stage during which urban planning regulations for the district will be determined according to the principles of sustainable development, to finally arrive at the last stage, which is the monitoring and evaluation of the project.

### **Relationship of citizen participation with hqe<sup>2</sup>r.**

The participation of the inhabitants is at the heart of the hqe<sup>2</sup>r approach, from the analysis phase of a project (with the inventory and then the diagnosis) and the search for solutions; the Isdis (integrated sustainable development indication system). System (objectives, targets, sub-targets and indicators), (Milutin Lješević, Vesna Ikonović.2005), allows to involve the inhabitants very much in love with the project for the development of the diagnosis that will lead to the definition of the issues and properties for the neighborhood, (Catherine Charlo-Valdieu and Philippe Outrequin 2011), And even to the stage of establishing the specifications of their projects. The goal of this approach is the sustainable development of the neighborhood at the neighborhood level and which aims to: (durability- functionality- comfort- reduction of consumption- aesthetics).

### **The Indi as a model for assessing participation.**

The INDI model (Indicator's Impact) is used to help the developer in the evaluation of a territory and urban project(s) by integrating criteria and objectives of sustainable development, this model is considered, the only tool that has the objective to evaluate a neighborhood before and after an urban project. (Catherine Charlo-Valdieu and Philippe Outrequin 2011), its 1st elaboration was in 2003 for existing neighborhoods, this 1st version was used on the 14 neighborhoods of the project hqe<sup>2</sup>r whose Barton Hill neighborhood has Bristol structure, it was out of the 5 objectives and 21 sustainable development targets of the Isdis system which structures the hqe<sup>2</sup>r approach; the indi,2012 millennium has 127 indicators and 235 measurement methods; This Indi model continues to evolve (Indi Ru2005 - Indi2010), arriving at the Indi 2012 model, which was deemed useful in our study evaluating citizen participation in World Bank projects in Algeria; and especially in its 4th issue which deals with the new concept of participation, which is a necessary condition of sustainable development, if not sufficient, this need is enshrined in the principles of sustainable development adopted at the Rio Conference in 1992 and which is reflected in the hqe<sup>2</sup>r approach. The indi model,2012 has 127 indicators and 235 measurement methods. The method of aggregation of the various measures (Apple Weighting), the rating scale proposed, is 0 to 5, depending on the degree of processing. The INDI model 2012 was developed on the basis of a reflection described in two books:

- eco-neighbourhood instructions for use, Éditions Eyrolles 2009.
- Conceive and evaluate an eco-neighborhood project , Monitor Edition 2012.

Before embarking in the evaluation citizen participation in the projects indicated above with the INDI model, in so far as there are many questions to inform, we will start by making an inventory , this inventory is a description of the site, based on the questions asked, taking into account the criteria set out in the indicators sheets (see the book, design and evaluate an eco-neighbourhood project, Issue of the monitor2012). for the instructions for use of INDI The 2012 vintage, there are several steps: The 1st step: fill in the "Home" tab, opens automatically when opening the file, it is necessary to fill in: the name of the location of the project to be evaluated; the 2nd step type of project: there are two types of projects: in our case we select "renewal project", because the project to be evaluated is existing, then we select "initial diagnosis"; if we want to make a 2nd evaluation we select "l evaluatin2" Of course after the use of the project; we note the selection «l evaluatin2» either in the same file of the initial diagnosis, otherwise the graphical comparisons cannot be done automatically once this anglet «Home» Fully fill in, click on "next step" at the bottom right; once step 1 has been validated, an anglet named "base" appears, a message indicates that the assessment base is ready and proposes to start the assessment of the project or neighbourhood, To do this, it is necessary to advance the assessment by line by preceding it in the following way: - read the indicator of the associated measure - write in the box «description/justification», a text that describes the project or neighbourhood being assessed (inventory) and that will justify the score assigned based on the proposed scoring scale thresholds for the measure, assign a score to the neighbourhood or project being assessed; a drop-down menu allows you to select the desired rating, this rating is between 0 (the worst) and 5 (the most ambitious); when assigning a rating, a coloured cursor appears (and reflects the assigned rating) , if the indicator measure is for the project and is integrated into the evaluation, the operator will indicate in this same column the letter "o" for "yes", the proposed rating is taken into account (and the rating will be zero by default ,if no rating is assigned) , whereas it is not if the operator indicates "n". Once all the lines have been

filled in, click on the button at the top right of the "validate the evaluation and obtain the results" window for any evaluation mode. See table n°1.

The scoring criteria. **table n°1.** The scoring criteria

criteria	Suggested rating
Absence	0
Very insufficient	1
Rather insufficient	2
Medium	3
Rather satisfactory	4
Very satisfying	5

**Source** .Catherine , C,V. Philippe , O , sustainable urbanism, designing an eco district, 2nd edition,Le Moniteur,France , 2011, p148

**Results. Initial diagnosis.**

After noting each indicator according to the state of the Sidi Slimane neighborhood, the INDI application gave us the results as follows:

see table n°2. The evaluation results: initial diagnosis of Sidi Slimane neighborhood. ( after author's rating 2009).

**Table n° 2.**

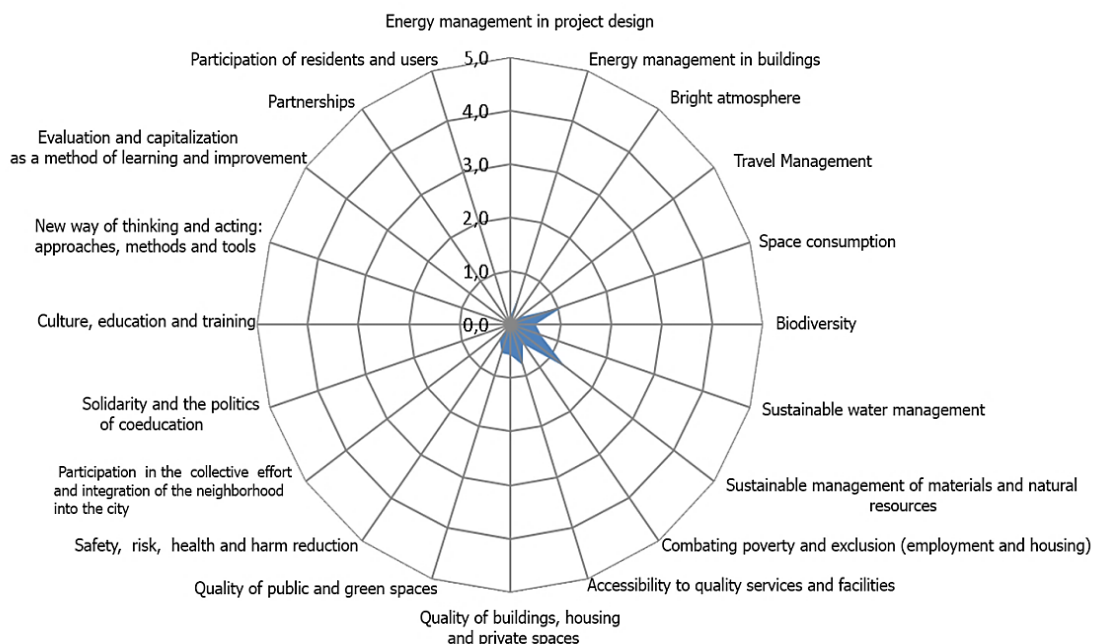
The evaluation results: initial diagnosis of Sidi Slimane neighborhood. ( after author's rating 2009).

INDI theme	Initial diagnosis
Energy management in project design	<b>0,2</b>
Energy management in buildings	<b>0,6</b>
Bright atmosphere	<b>0,0</b>
Travel Management	<b>0,2</b>
Space consumption	<b>1,1</b>
Biodiversity	<b>0,5</b>
Sustainable water management	<b>0,7</b>
Sustainable management of materials and natural resources	<b>1,4</b>
Combating poverty and exclusion (employment and housing)	<b>0,4</b>
Accessibility to quality services and facilities	<b>0,8</b>
Quality of buildings, housing and private spaces	<b>0,6</b>
Quality of public and green spaces	<b>0,6</b>

Safety, risk, health and harm reduction	<b>0,3</b>
Participation in the collective effort and integration of the neighborhood into the city	<b>0,0</b>
Solidarity and the politics of coeducation	<b>0,0</b>
Culture, education and training	<b>0,1</b>
New way of thinking and acting: approaches, methods and tools	<b>0,1</b>
Evaluation and capitalization as a method of learning and improvement	<b>0,0</b>
Partnerships	<b>0,0</b>
Participation of residents and users	<b>0,0</b>

**Source** , results of indi after the 1st evaluation of the initial diagnosis. ( after author's rating 2009).

And figure n°3. The results of INDI after the 1st evaluation of the initial diagnosis. ( after author's rating 2009).



Source : INDI, La Calade, millésime 2012

**Figure n°3.** The results of indi after the 1st evaluation of the initial diagnosis. ( after author's rating 2009).

**Source** , results of indi after the 1st evaluation of the initial diagnosis. ( after author's rating 2009).

**Discussion. Initial diagnosis.**

For the 1st theme, energy mastery in the design of the project, we find that the neighborhood got (0.2) point, This is due to the lack of use of renewable energies and

bioclimatic factors during the construction of the project; while for the topic, energy control in buildings, we find that the neighborhood scored (0.6) points, and this is due to excessive consumption of non-renewable energy; in the theme of luminous comfort, we got (0) points, and this is due to the lack of layout in the neighborhood, not to mention the unfinished construction work such as painting the facades, not to mention the lack of plant cover; in the travel management theme, we scored (0.2) points in the neighborhood, due to the lack of quality and safety in public transport, in addition to the lack of bike paths, air parking, and well-designed pedestrian paths. As for the topic of space consumption, we got (1.1) points in the neighborhood, which explains the excessive use of land, which resulted in a very high density of housing; in the biodiversity theme, we scored (0.5) due to the lack of ecosystem and vegetation protection measures during the construction phases, including blatant encroachments on forest and tourism areas in particular; in the theme of sustainable water management, we scored (0.7) points due to non-compliance with quality standards, in addition to leaks in the networks due to lack of maintenance. On the other hand, in the theme of sustainable materials and natural resources management, the value increased to (1.4) points in the neighborhood, due to the lack of use of sustainable materials; for the theme, combating poverty and exclusion, the value is (0.4) points, which explains the Low social status of the population; in terms of access to quality services and facilities, we received (0.8) points, due to the lack of job diversity, lack of services and healthcare in the neighborhood; in the theme of quality of housing and private spaces, we obtained (0.6) points due to the use of unsustainable building materials with the fragility of the majority of the population. The same is true to the theme of quality of public places and green spaces, we obtained (0.6) points, which indicates the absence of paths for people with special needs, the absence of comfort places for the elderly in urban furnishings; on the subject of health and safety risks and pollution reduction, we have received (0.3) points, which is an indication of the presence of all kinds of pollution, both noise and visual, and without any effort to find solutions to natural risks. However, unfortunately for the theme, participation in the collective effort and integration of the neighborhood in the city, point 0 is noted, which reflects the total absence of a policy of citizen involvement in urban life; as for the theme of Solidarity and Mixity Policy, we also get (0) points, and this is due to the absence of social diversity ;with regard to the theme of culture, education and training, we obtained (0.1) points, despite the presence of the media, but there is a lack of cultural awareness among the majority of citizens, with high dropout rates due to the inability to provide for them financially given the fragility of the inhabitants of this neighborhood and the early orientation of schoolchildren towards the labor market to help their families. On the question of new thinking and action: approaches; Methods and tools found (0.1). Due to the lack of implementation of agreed procedures and strategies for improving participation; as for the themes: evaluation and capitalization as a method of learning and improving, partnerships and participation of the inhabitants and users, we find the value (0) points, which indicates the absence of procedures and measures on the part of the responsible authorities, not to mention the total absence of a spirit of belonging among citizens; this is the result of exclusion and lack of social justice, not to mention the evasion of the administration in solving the problems of the population, even minor ones, like the right of residents to obtain legal bonds for their homes.

### **Results. Second assessment**

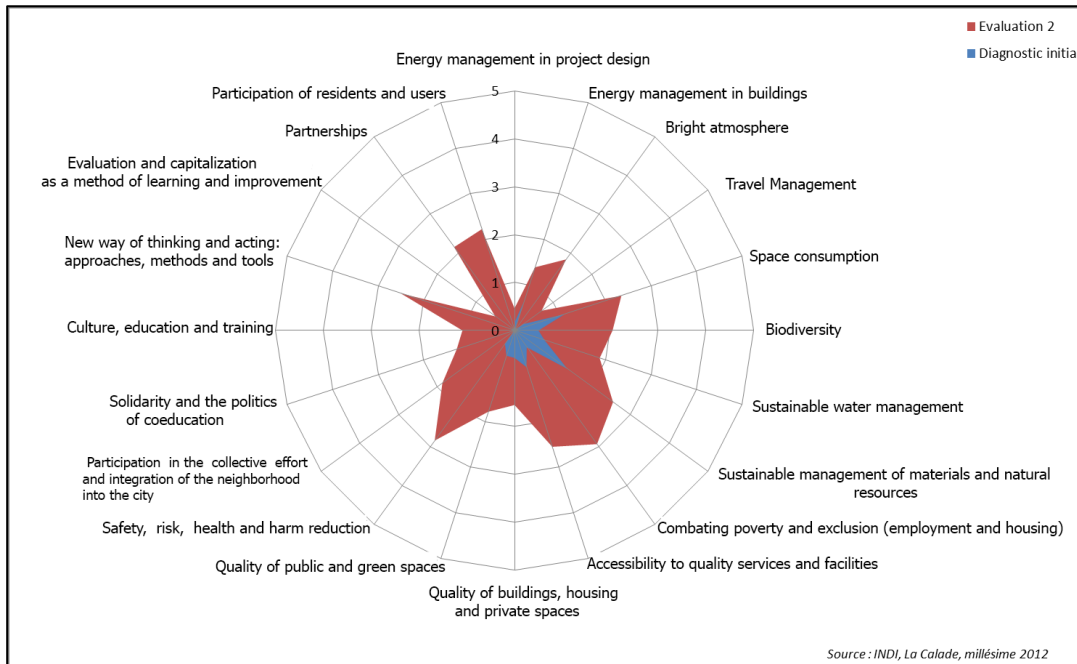
Ten years after the intervention of the World Bank in this neighborhood and within the framework of the city policy projects adopted by the Algerian state, and according to the visions

of the citizen in improving his living conditions, and after a second evaluation process through the application of the Indi, the following results were obtained:

Table n°3: results of the 2nd evaluation of the Sidi Slimane neighbourhood following the intervention of the World Bank (based on the author's 2020 rating).

<b>INDI theme</b>	<b>Initial diagnosis</b>	<b>Second evaluation</b>
Energy management in project design	0,2	0,5
Energy management in buildings	0,6	1,4
Bright atmosphere	0,0	1,8
Travel Management	0,2	0,7
Space consumption	1,1	2,4
Biodiversity	0,5	2,1
Sustainable water management	0,7	1,9
Sustainable management of materials and natural resources	1,4	2,5
Combating poverty and exclusion (employment and housing)	0,4	2,9
Accessibility to quality services and facilities	0,8	2,6
Quality of buildings, housing and private spaces	0,6	1,6
Quality of public and green spaces	0,6	1,8
Safety, risk, health and harm reduction	0,3	2,8
Participation in the collective effort and integration of the neighborhood into the city	0,0	1,9
Solidarity and the politics of coeducation	0,0	1,3
Culture, education and training	0,1	1,1
New way of thinking and acting: approaches, methods and tools	0,1	2,5
Evaluation and capitalization as a method of learning and improvement	0,0	0,5
Partnerships	0,0	2,2
Participation of residents and users	0,0	2,2

**Source,** Indi's results after the 2nd assessment of the Sidi Slimane neighborhood after the World Bank intervention. (Based on author's 2020 rating).



**Figure n° 4:** Indi's results after the 2nd assessment of the Sidi Slimane neighborhood after the World Bank intervention. (Based on author's 2020 rating).

**Source,** Indi's results after the 2nd assessment of the Sidi Slimane neighborhood after the World Bank intervention. (Based on author's 2020 rating).

### Discussion. Second assessment

After we have read the data in Table 2, which is shown in Figure n° 4, we noticed that the graph had changed and adopted a different approach, better than the original situation, where the subject of combating poverty and exclusion had reached its peak at (2,9), which is the highest point compared to the other themes, which explains the remarkable improvement of this theme compared to the situation of the citizens in the past; same for the issue of safety, risks, health and harm reduction, we get the score (2,8), which also explains the improvement of the safety conditions in this neighborhood and the reduction of risks and nuisances, we then reach the score (2,6) for the issue of access to public services and equipment, which revealed an improvement and ease of access to services by the populations; It is also noted that the issue of sustainable management of materials and sources has jumped by more than (1) point to reach (2,5), which indicates the level of culture of use of more sustainable materials in construction in this neighborhood; What attracts more attention is the high point of the consumption of space in the neighborhood, reaching (2.4) and it increases significantly, Which explains why the infringement on the land remains a characteristic of this neighborhood despite the dissuasive measures adopted by the State to stem this phenomenon which has helped the local manager in promoting local development; It should also be noted that all the topics related to participation represented participation in collective efforts, solidarity and mixed policies, new ways of sanding and acting, partnership, participation of inhabitants and users... etc, have moved from note (0) to note (2,5), with a slight discrepancy between them in this area compared to what it was before, and this is due to the new policy of the State in the promotion of associative work in the city and the consolidation of the bases of participatory democracy in accordance with the regulations of the United Nations and international organizations in this regard.

### Conclusion

Based on the results of the analysis of the Indic benchmark of the World Bank project in the Sidi Slimane neighborhood, whose goal of Resorption of Precarious Habitat, and which aimed to push citizen participation to advanced stages (the Arnstein scale), (Newig. 2014), it was concluded that: whereas the application of the principle of participation was hampered by several obstacles which prevented its activation, It materialized in the absence of clear laws regulating the process of participation and clarifying the mechanisms, modalities, scope, extent to which the results of participation are mandatory, including the definition of the role of the administration, organization of participation until the end of the conclusions, In addition to the citizen negligence of the project, this is due to the loss of trust towards local elected officials and the various local authorities, due to their failure in most of the previous programs to solve the problems of the neighborhood in particular and the city in general; Therefore, much remains to be done to make participatory action a reality, especially in situations where comprehensive and integrated projects are needed to involve citizens in improving their living conditions and democratizing urban decision-making in their particular neighborhood and in their city in general; as a result, the success of any development project depends on its sustainability and social accessibility and economic profitability that improve people's standard of living and its feasibility.

### References

- 1-Béatrice Plottu.Eric Plottu,(2021). site user participation: the solution to challenging modernist architectural planning and design. *Landscape Research*..Volume 46, 2021Issue6Pages845-859,
- 2-Béatrice Plottu.Eric Plottu,(2021). IPID .Pages 282-298
- 3-Bojana Mihajlović.2015. Protected rural areas of Serbia - the possibility of sustainable development (Example: Special Nature Reserve “Uvac” and the settlement of Negbina) – pulletin of the Serbian,GeographicalSociety, tome,xcv,no-4-p125-140. .
- 4-Catherine, Carlot-Valdieu , Philippe, Outrequin. 2011. Sustainable urbanism. designing an eco district- 2nd edition .Le Moniteur-France , p17.
- 5-Catherine, Carlot-Valdieu , Philippe, Outrequin.2004. Ibid - p 135.
- 6-Catherine, Carlot-Valdieu , Philippe, Outrequin..2004. La démarche HQE<sup>2</sup>R de conduite de projet urbain intégrant le développement durable.  
[http://www. Aphekom Uvsqfr/img/pdf/synthese\\_de\\_la\\_demarche\\_hqe2r](http://www.Aphekom.Uvsq.fr/img/pdf/synthese_de_la_demarche_hqe2r) PDF.
- 7-Godschalk, D,R, 2003. Public participation in natural hazard mitigation policy training: Challenges for comprehensive planning. *J. Approximately. Plan. Manag.*, 46, 733-754.Google Scholar 10.1080/0964056032000138463.
- 8-Hayet ,Mebirouk.2018. Issues and instruments of an urban policy, progressive housing as an alternative to the precarious housing of Sidi-Harb of Annaba (Northeast Algeria), <https://www.erudit.org/fr/revues/cgq/2018-v62-n177-cgq05235/1068742ar>
- 9-Hensen.H.S. , M. Maenpaa. 2007. An overview of the challenges for public participation in river basin management and planning. *Manag. About. Qual. Int. J.*, 19, 67-84.Google Scholar
- 10-Irvin, R . J. Stansbury .2004. Citizen participation in decision making, is it worth the effort? *Public adm. rev.*, 64, 55-65.Google scholar 10.1111/j. 1540-6210.2004.00346.x
- 11-Kaddour, Derbel.2022. Citizen participation in planning local and urban in Algeria. *demographic and urban studies. vol. 37, no. 1 (109), January-April, pp. 121-157* ISSN 0186-7210; and ISSN 2448-6515; <http://dx.doi.org/10.24201/edu.v37i1.1966>

- 12-Kelvin Barichievy.Laurence Piper.Ben Parker. Assessing 'participatory governance' in local government : a case-study of two South African cities : research paper.Published Online.2005.<https://hdl.handle.net/10520/EJC88143>
- 13-Loïc Blondiaux et Jean-Michel Fourniau-2011. [Http://www.cairn.info](http://www.cairn.info) , revue, participations, n1, page-3
- 14-Malika, O. Boudjema, K.2016. Five continents- Romanian journal of geography- Volume 6 / Number Summer . ISSN: 2247-2290 pp. 134-152.
- 15-Maynard. C.M. 2013. How public participation in river management improvements is affected by scale. *Area* 45, 230-238.Google Scholar 10.1111/area.12015
- 16-Milutin, L. Vesna I.2005. Indicators of sustainable development of Raška region - 71-80p ,bulltin of the Serbian geographical ,Tome,1,2005 <http://glasniksgd.rs/index.php/home/article/view/523/467>.
- 17-NACIB, Y.1986 Oasian culture, ENAL-L'Algérie ..
- 18-National report of Algeria.2011.19th session of the United Nations Commission on Sustainable Development (CSD-19).
- 19-NEwig,J. 2014. What role of public participation in implementing the EU Floods Directive? A comparison with the water framework directive, early evidence from Germany and a research agenda. *Environ. Policy Gov.*, 24, 275-288. Google Scholar 10.1002/EET. 1650.
- 20-Reed, M.S, 2008. Stakeholder participation for environmental management, a literature review. *Biol.* 141, 2417-2431.Google Scholar 10.1016/j.biocon.2008.07.014
- 21- Romain Bony-Cisternes , (2019). Changes in official development assistance in Vietnam as seen through the prism of governance. *International Review of Development Policy*. Vol. 11, no. 1. <https://doaj.org/article/60b43e76603b451796794383cc714ea1>
- 22-S. R. Osmani.2007. participatory governance forefficiency and equity : A noverview of issues and evidence. A background paper for the World Public Sector Report 2007. The United Nations Department for Economic and Social Affairs.NewYork.[https://pure.ulster.ac.uk/ws/files/11744170/Participatory\\_Governance\\_for\\_Efficiency\\_and\\_Equity.pdf](https://pure.ulster.ac.uk/ws/files/11744170/Participatory_Governance_for_Efficiency_and_Equity.pdf).
- 23-Sandra, A. Moreno. 2004. The civic participation of new Canadian citizens from Peru . Submission to the faculty of graduate studies for the master of science (M.Sc.) in Psychology - University Montreal- 2004 p29.
- 24- Ulla Rosenström. Simo Kyllönen ,(2007). Impacts of a participatory approach to developing national level sustainable development indicators in Finland. *Journal of Environmental Management*. Volume 84, Issue 3, Pages 282-298.
- 25-UNEP .Document of the United Nations Environment Program - New York - UNEP/EA/1/2 - 4/4/2001.<https://cites.org/sites/default/files/fra/com/sc/45/F-45-06.pdf>.