

Technium.

39/2023

2023
A new decade for social changes

Technium
Social Sciences

Powered by

PLUS
COMMUNICATION



International
Communication & PR



Urban development and peri-urbanization in the Hodna Region. Fragmentation of urban space; City of M'sila

Oudina Fatima¹, Boudjemaa Khalfallah²

¹Department of Architecture, Farhat Abbas University Sétif, Algeria, ²Department of City Management, M'sila University

Zohra.fatimazohra.oudina@univ-msila.dz, boudjemaa.khalfallah@univ-msila.dz

Abstract. The shift and changes that are happening in the world—and Algeria in particular—is rooted in urban existence. The significant changes in social structures and lifestyles have resulted in rapid, vast, and even violent urbanisation during the past few decades. The urbanisation of our cities is no longer a reality that can be proven, claim the many studies looking into the issue. The periphery developed as a result of urban expansion, which allowed these cities to expand past the boundaries that colonisation left behind after independence. In this regard, it was considered worthwhile to present this paper that challenges the structure of the Algerian city using the example of the city of M'sila, which is located in the Hodna region and has a structural framework characterised by discontinuities and a spatial expansion. Moreover, typo-morphological; the term "**suburbanization**" has been used increasingly commonly to describe this tendency. The question of urban fragmentation is fundamentally raised by this type of "**fragmented**" **urbanisation**. The obvious question is: How are the cities distributed? Is the spread unified in both time and place?

Keywords. Urbanisation, periurbanisation, urban sprawl, spatial fragmentation, M'sila

Introduction

The term "*peri-urbanisation*" first appeared in the field of social sciences almost 40 years ago to describe a new method of urban development that does not involve densification and preservation of the historic city's built environment but rather involves the influx of people from first, then activities, into formerly rural areas that are subsequently transformed and integrated, if not into the city in the morphological sense, at least into the urban system in the functional sense.

Research methods and tools

The present research attempts to shed light on the urban evolution of the city of M'sila as manifested by the disproportionate spreading of its urban periphery and the effects of the different changes that result in order to gain a thorough understanding of the mechanisms underlying the current urban dynamics through the bursting of the building and its socio-spatial impacts.

This study's demographic expansion will be analysed statistically and quantitatively, and its spatial extension will be analysed using a cartographic technique. These two

evolutionary theories will help us comprehend the significance of peri-urbanization and the rhythm of M'sila's urban sprawl in once rural places. We shall be able to gauge the importance of M'sila's demographic evolution and question the causes of this novel dynamic by conducting a statistical study of various census data pertaining to all recent urbanisation sites.

1. Urban spread, periurbanisation, rurbanization and exurbanization; in Algeria; concepts that are increasingly difficult to grasp:

"Urban sprawl" or peri-urbanization commonly refers to the consequence of the propensity of inhabitants to settle in individual housing on the outskirts of cities. Suburbanization is the result of the spatial extension of housing but also of transport infrastructure and activities: these extensions should also be considered alongside that of housing urbanised and to the formation of new *"urban peripheries"*, often qualified by the phenomenon of *"exurbanisation"*, *"periurbanisation"* or *"rurbanisation"* according to the authors who have taken an interest in the question.

Thereafter, the issue of the city raises important issues. Many modern scientists are faced with difficulties as a result of its evolution and future. It is currently the focus of discussion about the city among lawmakers, decision-makers, and planners as well. These inquiries, which evince a strong sense of worry about the future of cities, are hardly accidental; they have their roots in research on fragmented urban development.

Among the characteristics of its fragmented urban fabric: a mode of urban growth marked by a scattering of new settlements that lead to discontinuity and discontiguity of the elements that compose it. The result is an absence of articulation and easy communication between these *"fragments"*. It is very much a matter of spatial as well as social discontinuities, of a dilution of the urban in the rural, a new urban form that breaks with the classic city, as F. Navez-Bouchanine rightly points out "...that this new urban form would run the risk of causing the disappearance and extinguishing, through discontinuities, of the values of conviviality, citizenship and urbanity..." and continuing further "...The bursting is experienced as a loss, as a dissolution d'un model...". in "La périurbanisation en France" by Dézert B, Metton A and Steinberg J., SEDES, Paris, 1991, 26 pages.

At the boundary between the urban and the rural, where there is such interpenetration between them that any definition of their contents, even the clearest and most comprehensive one, would be imprecise, "fuzzy sets" are subsequently formed.

2. Suburbanity or urban spread; Effects / Consequences:

Urban sprawl has a wide range of negative effects, many of which are particularly severe since they frequently result in high running costs:

- ❖ The increasing growth of industrial and commercial surfaces;
- ❖ The transformation of transport networks is reflected in particular by an ever-increasing influence of spaces reserved for roads;
- ❖ The *"nibbling"* of agricultural land. On the outskirts of the city, there is a real front of urbanisation sweeping the agricultural land which near the cities is generally the most fertile.
- ❖ Urban sprawl is a process that fundamentally changes the data of the continuum. The question of measuring the phenomenon of sprawl in these margins is extremely delicate when there is an absence of spatial continuity of the built spaces.

3. Urbanization and urban spread in Algeria:

Urban sprawl and urbanisation are two recent and significant phases of urban growth in Algeria. Since gaining independence, people from rural areas in particular have started to flock to urban centres. While large cities continue to draw a sizable population, their growth rates have a tendency to slow. Additionally, urban sprawl is a sign of the strong expansion taking place in their peri-urban areas. However, small and medium-sized towns continue to be home to the majority of the urban population, which accounts for 58% of the overall population (between 3,000 and 50,000 inhabitants). In the latter group (the districts of Boukhmissa and Muilha in M'sila, the focus of our study), small, compact populated places have multiplied and grown quickly within a radius of 12 kilometres around their towns.

Perpetual construction site, this peri-urban space is characterised by a differentiated morphology of its built fragments which alternate with the empty spaces of agricultural land.

Thereby ; we see that “Accelerated urbanisation in a country in crisis like ours gives the measure of the crisis of the city and in the city because the precariousness of urban life affects both men (informal employment, living conditions...), activities (explosion of the commercial branch, decline in industrial production, etc.), buildings (non-compliance with architectural rules, non-compliance with regulations, etc.), city management (equipment, conflicts, degradation of the environment...). This means finally, the double action to be carried out by the central political power in terms of reorganising the urban and territorial framework and secondly, the implementation of a real policy of the city perceived as a living structure. in perpetual evolution”. (Abed Bendjelid, “Urban framework and population in Algeria”, *Insaniyat /humanities* * 2001, p131-138.)

In this regard, one must question the indicators that testify to the presence of peri-urbanization around Algerian cities, through those of the Hodna region, precisely in M'sila, and to discover the specific problems in their development. The research will focus on the trend towards peri-urbanization and the transformation of the rural environment in the vicinity of urban agglomerations in the Hodna region through the case of the city of M'sila.

4. *Difficulties common to the whole country.*

Algerian cities are created and rebuilt from their peripheries, just like cities everywhere else. According to F. Navez Bouchanine's reflection from 2002, the geographical discontinuity and establishment bursting are the primary causes of the major and medium-sized Algerian cities' current spatial fragmentation, in this case, the Hodna region, particularly M'sila.

In recent years, and mainly in the Hodna region, the development of this new form of urbanisation has taken place at an accelerated pace; the effects of this evolution risk nullifying the local hierarchical balance, if they are not taken care of and deploy the means of action necessary to slow them down.

It should be emphasised that this causes a wide range of issues, including the following: The expansion of substandard housing and slums around large agglomerations to the disadvantage of agricultural land throughout the 1970s and 1980s was one of the most conspicuous manifestations of the rural exodus, which resulted in a significant loss of the work force on the ground.

The Hodna region, represented by the city of M'sila; therefore finds its extension and the development of its activities in its peripheral rural space. This growth has become the number one hazard to this landscape. Peri-urban agriculture is undergoing both land and economic change, disrupted in its spaces and in its activities. Most of its agricultural land is blocked between the city in the centre and the ring of agglomerations on its periphery, thus threatened on all sides by urban growth. It supported the sprawl of the city and allowed the

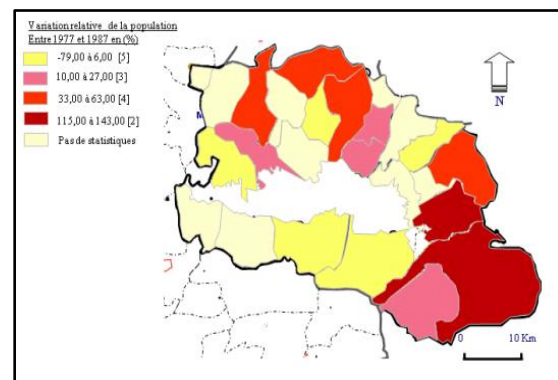
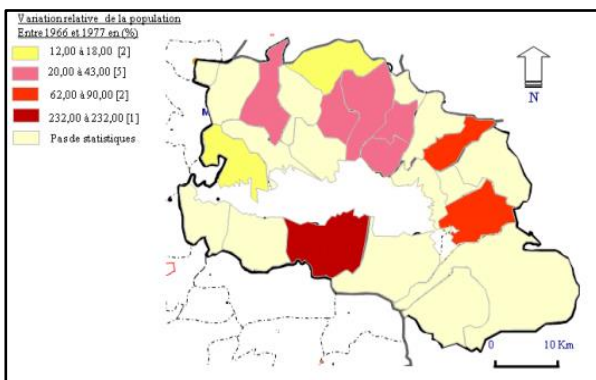
widening of the base intended for the built area, to the detriment of the landscape quality and agricultural production.

M'sila, the subject of our study and an agglomeration of around 128,562 people in 2008, was, like many other cities in the nation, a victim of a protracted process of uncontrolled urbanisation, consumption of agricultural land, as well as environmental degradation and landscape modification. The effects of this peri-urbanization have not only been detrimental to the agricultural sector; they have also led to the degradation (physical, social, and functional) of public spaces.

This space is no longer occupied only by agricultural activity when it comes to peri-urban areas, but by several other activities (residential, industrial, university, etc.). All these new and varied activities take place in the rural space.

Map 01:

Variation in the population of the municipalities of Hodna (between 1966 and 1977) and (between 1977 and 1987) and (between 1987 and 1998) and (between 1998 and 2008)



Source: NSO. M'sila DPAT + edited

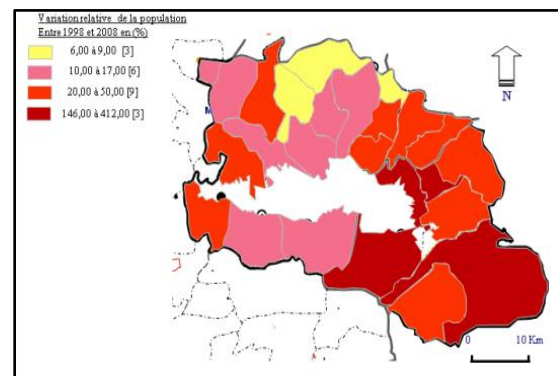
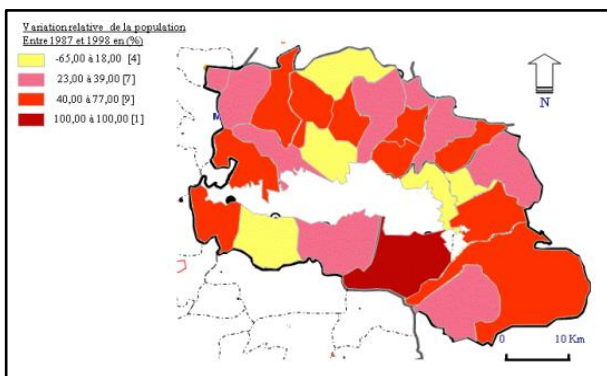
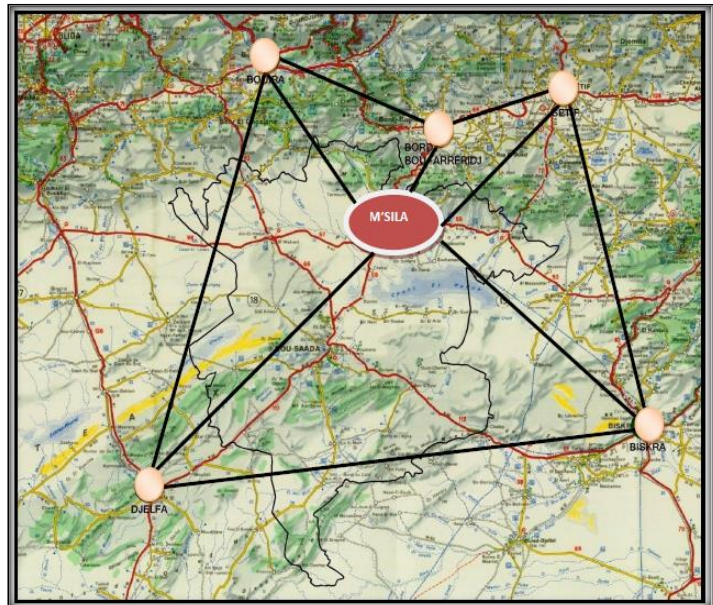


Figure 2: Location of the City of M'sila

It is immersed in the Hodna region, the municipality of M'sila occupies an area of 232 km², with a population of 156,647 inhabitants according to RGPH 2008, and a density of 675 H/KM² and is limited by:

- To the North, by the wilaya of Bordj Bou Arreridj (municipality of El Euch)
- To the south, by the municipality of OuledMadhi.
- To the east, by the municipalities of El Mtarfa and Maadid.
- To the West, by the municipality of Ouled Mansour.

This gives the municipality of M'Sila and therefore the city a strategic and dominant position over the entire territory of the wilaya.



6. Genesis and evolution of the city of M'sila:

The original city centre, known as ZABI: an agricultural town, was founded during the Roman era close to "**BCHILKA**," 3 km from the present-day capital. The Fatimids reconstructed it in 935 after it was destroyed by them in 740. In 1015, the new core was built by Djaafar ibn Hammad and which is currently called "**the El Djaafra state**". The extension of this district was made towards the east bank of Oued El Ksob, thereafter there was the birth of the districts "**Ras El Hara, Kherbet Ellis, Chtaoua**". The urban fabric was characterised by its architectural simplicity, its blind facades that opened inside "introverted" and experienced the appearance of what is called "**el Hara**".

The El Kraghla district, which is an expansion of the Chtaoua, Ras El Hara, and El Djaafra districts, was built during the Turkish era. The military barracks on the west bank of Oued El Ksob, the colonial Eddahra district, and various administrative tools were built during the colonial era. Construction of the community housing (HLM), Hai El Aargoub, and Hai El Kouch all followed one another. Extroverted facades that open to the outside defined the architectural style of this time period. Given the agricultural vocation the city had gained, the Ced El Ksob dam and the irrigated periphery were constructed.

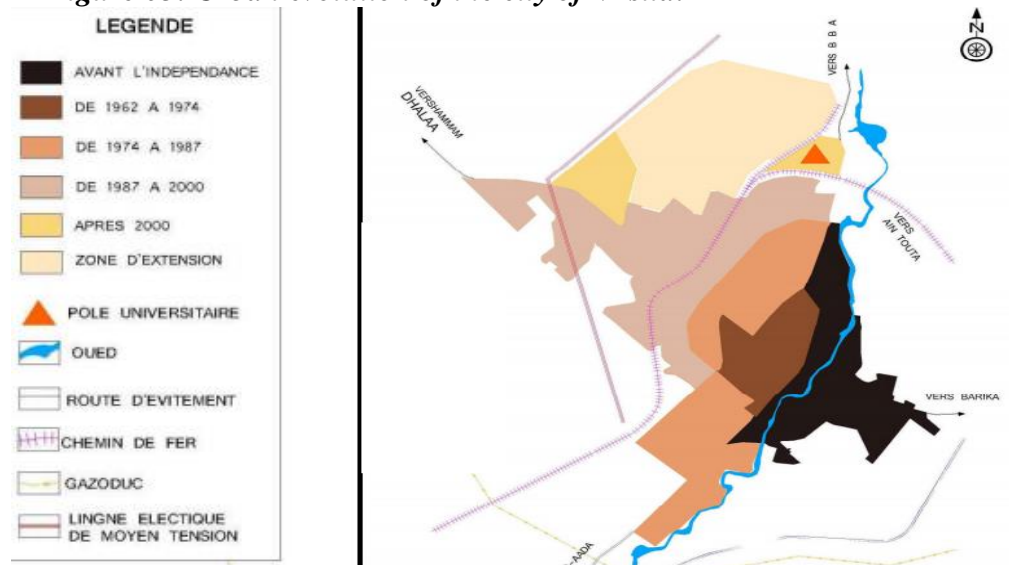
After independence, the city experienced several urban changes:

- Between 1962-1974 the city built 300 and 500 dwellings, following the earthquake of 1965; Then the construction of the **Hai Echouaf** subdivision. As for the illicit habitat, it was located in the eastern part of the city, called: The ring road. During 1974-1987, the Wilaya of M'Sila was promoted to the rank of chief town of Wilaya, where the city benefited from several administrative, service and industrial facilities. There was then the construction of the industrial zone and the two urban residential zones as well as several subdivisions.

In terms of studies, the PUD was launched in 1977, followed by the PDAU 1992 and other studies with the aim of tracing the harmonious development of the agglomeration in the short and medium term. (Source PDAU. M'sila 2005) In addition to the agglomeration capital

of M'sila, the commune governs five other secondary agglomerations: Boukhmissa, Mezrir, Muilha, Barrage K'sobet Ghezal. The scattered area includes six rural groups: Barrage K'sob, M'jaz, Draa Ben Rabbeh, El-Hson, OuledBdira and Ouled S'lama.

Figure 03: Urban evolution of the city of M'sila:



Source: SCU of the urban area of the city of M'sila, 2009

7. Urban issues in the city of M'sila:

The population of the city of M'Sila increased five times between 1966 and 1998 to reach 128,562 people in 2008, with a growth rate of 2.24%, higher than the national average, which may be attributed to both natural growth and the rural population migration that the town of M'Sila experienced. Furthermore, the promotion of the city of M'Sila to the rank of chief town of Wilaya, has made the latter benefit from several development programs and structuring projects with a regional scope; special mention is made of the creation of industrial zone No. 01 in 1975 and the activity zone to the south of the city, which have been important development poles, thus attracting a massive workforce and encouraging a significant rural exodus which has for reasons:

- ❖ - The search for better living conditions.
- ❖ - The existence of a large equipment network.
- ❖ - The offer of employment opportunities.
- ❖ - The regression of investment in the agricultural sector due to the drought.

As a matter of fact, there exists an urban concentration in the city of 84.61% compared to other municipalities. On the urban plan, the city of M'sila is today confronted with a series of problems such as the degradation of the living environment and equipment, unemployment, and social exclusion, giving credence to the idea of a real "*urban crisis*". The disproportionate growth of urban space is not without consequences for the functioning of the city. The massive rush of rural people after 1974 was accompanied by the bursting of a planned fabric of collective housing and subdivision to deal with it, and in return, there was the proliferation of illegal housing, such as the Rocade and El Kreghla, Chtaoua, Sidi Amara and Mouilha, Ichbilila; the latter occupied agricultural land.

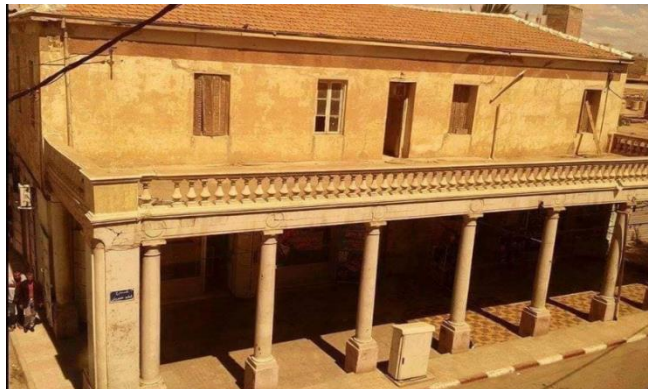
8. Urban structuring and urbanization axes

M'sila; What urban form and what features for its fragmentation?

Like most Algerian cities, M'sila has seen an increase in its population, but it does not necessarily have the service or polarisation capabilities to support this mass. The construction of the city today is centred on the old M'sila, which gives rise to two significant axes that are home to the city's principal businesses, community centres, administrative offices, and services: the Bordj Bou Arreridj-Bou Saada axis and the Algiers-Barika axis. Other city structuring axes, in the form of North-South orientation belts, are added to these axes.

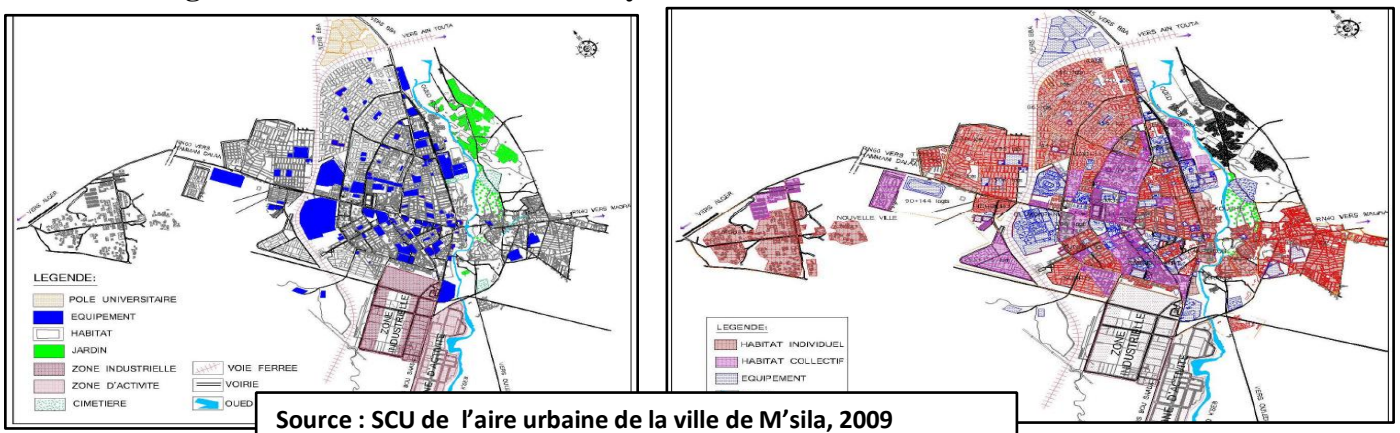
By the same token, the most dominant characteristic of the urban structuring of the city is the heterogeneity of the urban fabric, which results from the juxtaposition of habitat and equipment of different forms and natures, individual, collective, cooperatives, subdivisions, and auto- construction. Its urban framework is made up of several heterogeneous neighbourhoods in terms of the organisation of their spaces.

The RN40, which connects the old neighborhoods of El Kouche, Djaâfra, El Argoub, and La ring road, passes through the old M'sila, which is the old town. The majority of the homes there are isolated and run-down. The majority of the collective amenities and the administrative buildings are concentrated in the city centre, which is the first true extension of the city.



Picture1: the view of M'sila from the colonial era

Figure 04: Land Cover Of The City Of M'sila



Eventually, M'Sila is a city of regional significance because of its position, significance, and history. This acknowledged dominance carries just as many benefits as it does obligations.

The city of M'Sila, whose evolution has been captured in an ink stain, is characterised by a disarticulated urban environment and built environments that are frequently incorrect and not "recognized" by the locals. A poor articulation between several worlds that are spatially concretized in the form of traditional city, colonial city, and postcolonial city is how the spatial explosion is understood at the scale of the city centre.

Urban sprawl and its impact Urban problems like space fragmentation have drawn the attention of numerous scholars. By using the question of the city of M'sila, we have attempted to define the key elements of spatial fragmentation and to unravel the process of urbanisation in the Hodna region.

9. M'sila an enclaved city, anarchic urbanization:

The principal city of the wilaya, the city of M'sila, is home to the wilaya's first urban centre, with 85% of the wilaya's total population concentrated there. This high population density is the root cause of all the issues that the wilaya is currently facing, including heavy strain on infrastructure, rising housing demand, bursting of the urban fabric (extension outside the PDAU's boundaries), and the spread of anarchic urbanisation in outlying areas.

The high population density and the structuring of facilities at the commune level have not been without biasness; on the one hand on the organisation and the balance of the urban and rural framework of the whole wilaya and on the other hand on the urban development of the city, which has seen several constraints of a demographic order, legal nature of the properties of the land on the south-east side, a massive and relatively anarchic urbanisation of an already saturated site, in addition to extensions in the peripheral zones (illicit individual constructions), we are witnessing the proliferation in all directions of spontaneous housing districts (old Ichbielia, Elkouch, Larocade, Boussaâda road, etc.). Its basic infrastructure accentuates its isolation and contributes to the deterioration of the desired urban quality.



9.1. The national state and the emergence of peripheral zones

Following independence, the urbanisation policy launched several interventions by programming "ZHUN" operations and further industrialising the territory (1975 ZHUN 1 and ZHUN 2); however, this has failed to alleviate Algeria's housing crisis and completely eradicate illegal housing. In this case, the city is undergoing unprecedented shanty townization, which was mitigated (in 1985) by a de-shantyvilization operation involving the relocation of illegal housing to remote but problematic locations.

A reorientation of housing policy towards real estate development was born following the economic crisis of 1986, the nature of which required the selection of urban and more coveted land. The scarcity of the number of social housing units built, as an effect of this policy, accentuated by a degenerated security situation, has led to the reappearance of precarious housing in peri-urban areas (Sidi-Amara, Echbilia is a very illustrative case).

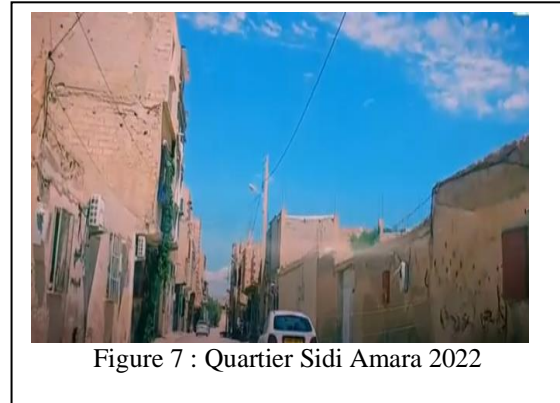


Figure 7 : Quartier Sidi Amara 2022

9.2. M'Sila; What Traits For The Fragmentation Of Its Urban Form?

Alongside the geographical particularities, there are the land, geomorphological and human constraints reflected in particular by the industrialization of the 1970s. Combined with other factors, these constraints inevitably shape a particular form of the city. Many works attest that the Algerian city presents an uncontested physical fragmentation (Navez-Bouchanine F. and Signoles P., “*Spatial fragmentation and urbanity in the Maghreb*”, report for the Urban Plan, order form n° 2 of February 25, 1998) . This "negative" form of the city is generated if certain traits are brought together, knowing that spatial fragmentation is applied to urban situations characterised by a fragmented, heterogeneous aspect that is physically and visually poorly articulated.

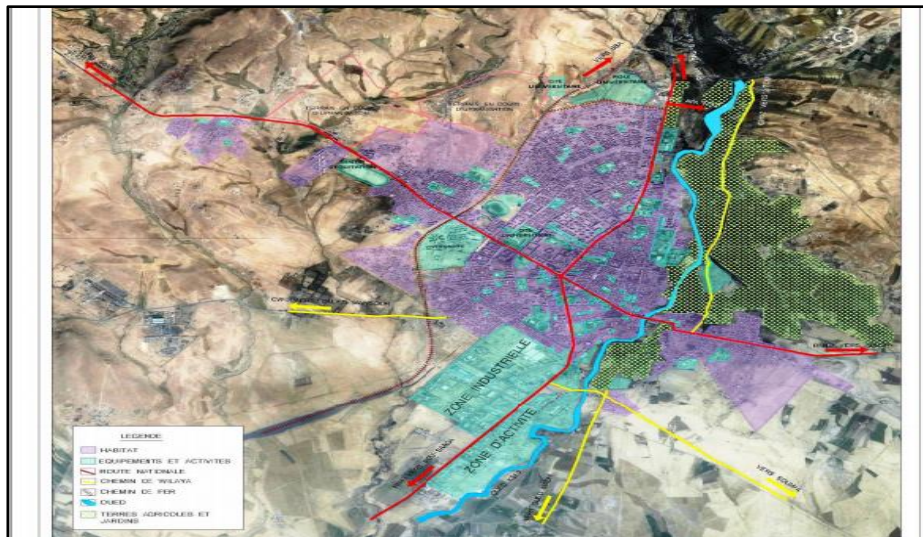


Figure 8 :Quartier Boukhmissa 2022

9.2.1. Bursting and scattering of new settlements

Peri-urban sprawl has been unplanned and unchecked since colonial times. The study of the M'SILA agglomeration's spatial occupation indicates an irregular pattern of urbanization, with density in the North and collapse in the South. This discrepancy may be seen in the North-West region's concentration of urbanization and the South region's emptiness, which is home to industrial operations.

Figure 6: Bursting and spatial discontinuity of the M'sila agglomeration.



9.2.2. Lack of articulation between certain urban “splinters”:

The organisation of the agglomeration of M'sila, whether at the scale of the Hodnaou region at the inter-municipal level, presents a certain inconsistency and a lack of articulation between the North and the South and the densification of relations between the North-West and the East, this calls for actions in different terms to lead to more harmonious development.

Moreover, the vocation of the spaces is at the origin of the interstices emerging between the East and the West: the South is endowed with industrial activities and large facilities while the East is content with deprived peripheral localities where locates the lowest population rate. It is specified that the articulations cannot be reduced to the road meshes, they extend to the external spaces practically absent within M'sila and when they exist, they are generally ill-defined and cannot accomplish their role as elements of articulation and structuring.

9.2.3. Heterogeneity of landscape forms:

Both at the level of the urban fabric and that of the environment, the heterogeneity of the landscape's forms is evident. Currently, the city centre and the outlying areas where slums are grafted onto the new collective housing areas, such as Muilha, Echbilia, and Sidi Amara, or proximity to factories and large agglomerations showing an undeniable visual fragmentation, are marked by the juxtaposition of the rural landscape and the landscape in the process of urbanisation. The M'sila urban area is divided by a loose and underdeveloped periphery and a small city centre, which are contrasted by:

- The traditional core marked by the loss of its identity and separated from the colonial core giving rise to a dual city.

- Large complexes that offer a built environment in a disorderly urban space that legal, regulatory and technical instruments as well as development measures have been unable to contain;
- finally the planned housing estates located on the North and South-East part where a "segregated" habitat coexists (self-construction, slums), characterised by a lack of hygiene and infrastructure.



Figure 9 : Coexistence of two types of housing: social development and shanty towns

Table 03: Census precarious park through the commune of M'sila situation stopped at

Commune	Sites précaires	Nombre De Constructions	Superficie (Ha)	Matériaux de construction			Nbre ménages	Nbre familles	Construction occupée	Taux	
				Hétérocités	S/Structure	P.T. Dégradée					
M'sila	La rocade	394	12	12	293	101	394	450	351	43	
	El kouche	400	30	30	280	119	400	467	384	16	
	djaafra	96	10	10	62	34	96	104	82	14	
	Sidi Amara	19	06	06	15	2	19	19	19	0	
	Ouled Bdaira	41	50	50	27	12	41	41	41	0	
	Mouilha (2eme partie)	329	50	50	230	87	329	351	328	1	
	Argoub	213	7	7	86	122	213	232	184	29	
	Sbaa El Oharbi	32	4	4	2	12	32	38	32	0	
	El souaki	11	4	4	10	0	11	11	11	0	
	Cité Zaher	143	8	8	143	0	143	159	143	0	
	Cité Bader	295	10	10	295	0	295	352	279	16	
	Cité Cheikh Tahar	26	6	6	26	0	26	36	22	4	
	Cité Ichbielia	574	15	15	574	0	574	658	543	31	
	Jdnan El kbir	99	6	6	91	8	99	110	87	12	
	Guerfala	139	2	2	134	5	139	164	128	11	
	Route BBA	29	1	1	20	9	29	31	29	0	
	Mezrir	17	30	30	6	10	17	10	10	7	
	Ghozal +El Hessen+Toulba	15	60	60	15	0	15	18	9	6	
	Boukhmissa	59	80	80	49	3	59	75	59	0	
	Elbaradj	51	40	40	35	7	51	51	51	0	
	Lemjaz	14	40	40	14	0	14	14	14	0	
	Ouled Slama	7	3	3	3	4	7	7	7	0	
	Nouara	6	20	20	6	0	6	8	6	0	
	Mezraat Bel Kobbi	42	20	20	40	2	42	49	34	8	
	Cité Tark Ben Ziad	68	8	8	13	17	68	74	68	0	
	Cooper cheikh Mokrani	13	5	5	2	5	13	14	13	0	
	Machtala	15	3	3	12	0	15	15	15	0	
	Route Bousaada	76	2	2	57	19	76	88	57	19	
	Total		3223	532	532	2540	578	3223	3646	3006	2

31/05/2008

Source : Msila Statistical Yearbook 2008

In addition to the typo-morphological heterogeneity, the precariousness of the housing stock as an isolated indicator negatively influences the design of the urban landscape of M'sila and reinforces the visual fragmentation as much as the agglomeration of M'sila counts 3223 precarious housing units of which 82.81% are located in agglomerated areas and 17.19% in scattered areas. In addition, the park of the municipality of M'sila was estimated in 1998 (RGPH) at 20,119 dwellings.

This type of housing is characterized by illegal constructions which disfigure the urban landscape and the silhouette of the city, it is located in the peripheral districts of the city. The districts most affected by precarious housing are:

- Cité Ichbielia on the west side of the city, with 574 constructions or 18% of the total number of precarious housing.
- Cité El Kouche and cité La Rocade on the South-East side of the city of M'sila, represent respectively 12.41% and 12.22% of all precarious housing.

This figure (3223 constructions) rose at the end of 2008 to 2103 dwellings.

Table 03: Inventory of precarious stock across peripheral sites:

Commune	Peripheral sites	Build number	Area
M'sila	La rocade	394	12
	Sidi Amara	400	30
	OuledBdaira	96	10
	Muilha	19	6
	SbaaelGharbi	32	4
	Essouaki	11	4
	Ichbilia	574	15
	Guerfala	139	2
	Merzrir	17	30
	Ghozel –ElHesson- Toulba	15	60
	Boukhmissa	59	80
	Elbaradj	51	40
	Lemdjaz	14	40
	OuledSlama	7	3
	Nouara	6	20
Route de Boussada	76	2	

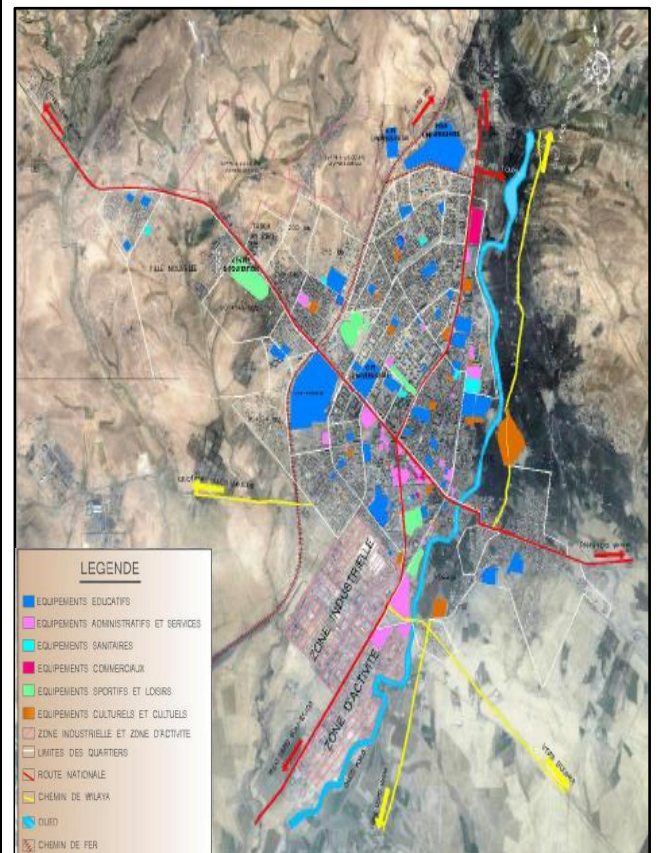
Source : Annuaire statistique de Msila 2008

9.2.4. Disparities in terms of urban facilities and services:

Equipment and service differences appear to be another divergence that reinforces socio-spatial disparities in M'sila. The following table illustrates the distinctions between several sectors in the city core and the suburbs:

Table 4: Gap in terms of urban equipment and services:

Sectors	City-center	Periphery
Telecommunication post	The city – centre concentrates within it 105 cybercafés (i.e. 80%) and 98 telephone booths (i.e. 76%)	The combined neighbourhoods concentrate 20% cybercafés and 24% telephone booths
Education sector	Dominance of the North-West zone (68% of achievements)	32% distributed in the South and East
Health sector	Excessive concentration of almost all state and private infrastructure in the centre of the city and the northwestern part (future extension of the city)	Private infrastructure is non-existent on the axis leading to Sidi Amara (on either side of the RN 40)
Sporting and leisure sector	Hyper-concentration in the centre of the city and the North-West part 82% (all types combined)	18% is spread over the rest of the space.



Source : Révision du PDAU M'sila 2014

Conclusion

The M'sila urbanisation is characterised by a concentric centre and a peripheral area that is underdeveloped and undervalued. It is distinguished by a fragmented and discontinuous urban landscape as well as a varied urban morphology. This type of fragmented or even fragmented urbanization is caused by a number of factors, including settlement fragmentation and the resulting spatial discontinuity, juxtaposition of various typo-morphological fragments in the fabric, which increases the typo-morphological inequality at the level of equipment and service.

Nonetheless, demographics play a major role in this extraordinary urban development. Large waves of rural populations that impacted the city a few decades later were fueled by the high rates of population increase that developed after the independence era. As a result, M'sila will later pay a high price and develop substantial urban issues (significant dysfunctions within cities, pronounced congestion; sources of various problems: Precariousness, spontaneity, deterioration of the urban living environment.). It will now have to deal with all the economic and social repercussions of this significant exodus movement (building of homes, equipment, job creation, etc.).

Two complementary approaches to the development of the intermediate city are urban extension and rehabilitation of the city within the city. In spite of the fact that urban renewal and urban extension are both parts of the same development strategy, Algeria is the only country where since independence, new urbanisation has received priority.

References

- [1] NAVEZ-BOUCHANINE F., "*Spatial fragmentation and urbanity in the Maghreb*", in Fragmentation in question: Cities between social fragmentation and spatial fragmentation (1-411), Harmattan, Paris, (2002), pp. 153-188.
- [2] BENDJELID A., 1998, "*The fragmentation of the urban space of Oran (Algeria). Mechanisms, actors and urban development*", in review Insaniyat n°5, Crasc, Oran, p, 61-83.
- [3] BENDJELID A., HAFIANE A., "Physical fragmentation in Algerian cities", in Spatial fragmentation and urbanity in the Maghreb, Tours, URBAMA,
- [4] COTE M., Algeria or the inverted space, Flammarion, Paris, 1988.
- [5] GENETIER PH., "*The rhetoric of the fragmented city or when the holistic idea is delegated to the local level*", in The fragmentation in question: Cities between social fragmentation and spatial fragmentation (1-411), the Harmattan, Paris, (2002), pp. 119-137.
- [6] S.SEBHI, "*mutation of the Algerian rural world, the Hodna*", OPU, Algiers, pp. 19-23.
- [7] ABED BENDJELID, "*Urban structure and population in Algeria*", Insaniyat / Humanities, 2001, F. Navez Bouchanine (2002),
- [8] J. DESPOIT; "*the Hodna* (Algeria)", PUF, Paris, p115
- [9] SAIDOUNI M., "*Elements of introduction to town planning*", CASBAH editions, 2000, Algiers.
- [10] DEZERT B, METTON A AND STEINBERG J. "*Suburbanization in France*", SEDES, Paris, 1991. 26 pages
- [11] MERLIN P., "*The suburbs of French cities*", French documentation, Paris, 1998, p. 47.
- [12] Monograph of the Wilaya of M'sila DPAT. M'sila, 2006
- [13] GDPR 2008
- [14] Revision of the PDAU M'SILA 2014
- [15] Urban Coherence Scheme (S.C.U) of the urban area of the city of M'SILA, 2009
- [16] Statistical yearbook of the municipality of M'sila, 2008.